

Protocadherin gamma (pan) antibody [S159-5]

Cat. No. GTX17690

Host	Mouse
Clonality	Monoclonal
Isotype	IgG1
Applications	WB, ICC/IF, IHC
Reactivity	Human, Mouse, Rat

Package
100 µg

Applications

Application Note

*Optimal dilutions/concentrations should be determined by the researcher.

Suggested dilution	Recommended dilution
WB	1:1000
ICC/IF	1:100
IHC	Assay dependent

Not tested in other applications.

Product Note This antibody detects ~100kDa. Cross-reacts with all Gamma-protocadherin-A, -B and -C proteins.

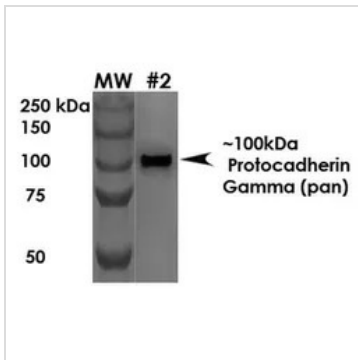
Properties

Form	Liquid
Buffer	PBS, 50% Glycerol
Preservative	0.1% Sodium azide
Storage	Store as concentrated solution. Centrifuge briefly prior to opening vial. For short-term storage (1-2 weeks), store at 4°C. For long-term storage, aliquot and store at -20°C or below. Avoid multiple freeze-thaw cycles.
Concentration	1 mg/ml (Please refer to the vial label for the specific concentration.)
Immunogen	Fusion protein corresponding to amino acids 808-931 (C-terminal cytoplasmic constant domain) of mouse Protocadherin-gamma-A1 that is shared by all 22 Gamma-protocadherins (A subfamily amino acids ~807-930, B subfamily amino acids ~789-912 and C subfamily amino acids ~818-941).
Purification	Protein G Purified
Conjugation	Unconjugated
Note	For In vitro laboratory use only. Not for any clinical, therapeutic, or diagnostic use in humans or animals. Not for animal or human consumption.



For full product information, images and publications, please visit our [website](#).

DATA IMAGES

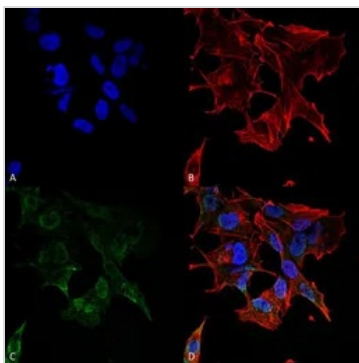


GTX17690 WB Image

WB analysis of rat brain membrane lysate using GTX17690 Protocadherin gamma (pan) antibody.

Loading : 10 µg

Dilution : 1:1000



GTX17690 ICC/IF Image

ICC/IF analysis of SK-N-BE Cells using GTX17690 Protocadherin gamma (pan) antibody.

Green : Primary antibody

Red : F-Actin stain

Blue : DAPI

Fixation : 4% Formaldehyde for 15 min at RT

Dilution : 1:100



For full product information, images and publications, please visit our [website](#).