

CNTF antibody

Cat. No. GTX17692

Host	Chicken
Clonality	Polyclonal
Isotype	IgY
Applications	WB, ELISA, IHC
Reactivity	Human, Mouse, Rat

Package
100 µg

Applications

Application Note

ELISA: 1/500 - 1/2000. IHC: 1/50 - 1/500. WB: 1/500 - 1/2000. Predicted molecular weight: 24 kDa. Optimal dilutions/concentrations should be determined by the end user.

Calculated MW 23 kDa. ([Note](#))

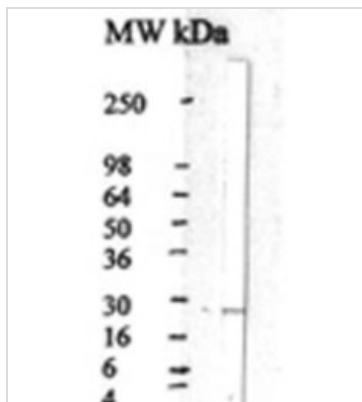
Properties

Form	Liquid
Buffer	PBS
Preservative	0.02% Sodium azide
Storage	Store as concentrated solution. Centrifuge briefly prior to opening vial. For short-term storage (1-2 weeks), store at 4°C. For long-term storage, aliquot and store at -20°C or below. Avoid multiple freeze-thaw cycles.
Concentration	1 mg/ml (Please refer to the vial label for the specific concentration.)
Immunogen	Two peptides from human CNTF were mixed and used as immunogens. Both peptides are highly conserved among human and mouse sequences.
Conjugation	Unconjugated
Note	For laboratory research use only. Not for any clinical, therapeutic, or diagnostic use in humans or animals. Not for animal or human consumption. Purchasers shall not, and agree not to enable third parties to, analyze, copy, reverse engineer or otherwise attempt to determine the structure or sequence of the product.



For full product information, images and publications, please visit our [website](#).

DATA IMAGES



GTX17692 WB Image

Western blot analysis of GTX17692 anti CNTF antibody



For full product information, images and publications, please visit our [website](#).