

NTCP antibody

Cat. No. GTX17693

Host	Rabbit
Clonality	Polyclonal
Isotype	IgG
Applications	WB, IHC-P, IHC-Fr, FCM
Reactivity	Mouse, Rat

References (1)

Package

100 µg

Applications

Application Note

*Optimal dilutions/concentrations should be determined by the researcher.

Suggested dilution	Recommended dilution
WB	0.1-0.5µg/ml
IHC-P	0.5-1µg/ml
IHC-Fr	0.5-1µg/ml
FCM	1-3µg/1x10 ⁶ cells

Not tested in other applications.

Calculated MW 39 kDa. ([Note](#))

Properties

Form	Liquid
Buffer	0.1% Na ₂ HPO ₄ , 0.45% NaCl, 2.5% BSA
Preservative	0.025% Sodium azide
Storage	Store as concentrated solution. Centrifuge briefly prior to opening vial. For short-term storage (1-2 weeks), store at 4°C. For long-term storage, aliquot and store at -20°C or below. Avoid multiple freeze-thaw cycles.
Concentration	500 µg/ml (Please refer to the vial label for the specific concentration.)
Immunogen	A synthetic peptide corresponding to a sequence at the C-terminus of mouse SLC10A1 (296-336aa EGLLFIIIFRCYLKIKPQKDQTKITYKAAATEDATPAALEK), different from the related human sequence by eighteen amino acids, and from the related rat sequence by three amino acids.
Purification	Purified by antigen-affinity chromatography
Conjugation	Unconjugated



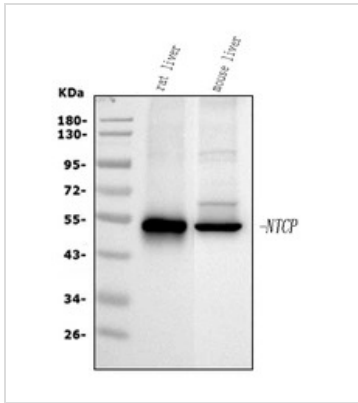
For full product information, images and publications, please visit our [website](#).

For laboratory research use only. Not for any clinical, therapeutic, or diagnostic use in humans or animals. Not for animal or human consumption.

Note

Purchasers shall not, and agree not to enable third parties to, analyze, copy, reverse engineer or otherwise attempt to determine the structure or sequence of the product.

DATA IMAGES



GTx17693 WB Image

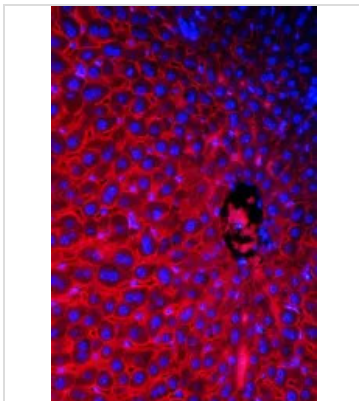
WB analysis of various samples using GTx17693 NTCP antibody.

Lane 1: rat liver tissue lysates

Lane 2: mouse liver tissue lysates

Dilution: 0.5 µg/mL

Loading : 30µg of sample under reducing conditions

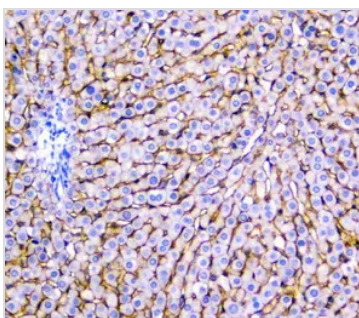


GTx17693 IHC-P Image

IHC-P analysis of mouse liver tissue using GTx17693 NTCP antibody.

Antigen retrieval: Heat-mediated antigen retrieval was performed in citrate buffer (pH6, epitope retrieval solution) for 20 mins

Dilution: 1µg/ml



GTx17693 IHC-P Image

IHC-P analysis of rat liver tissue using GTx17693 NTCP antibody.

Antigen retrieval: Heat-mediated antigen retrieval was performed in EDTA buffer (pH 8.0, epitope retrieval solution) for 20 mins

Dilution: 1µg/ml



For full product information, images and publications, please visit our [website](https://www.genetex.com).