

## NTCP antibody

Cat. No. GTX17693

<b>Host</b>	Rabbit
<b>Clonality</b>	Polyclonal
<b>Isotype</b>	IgG
<b>Applications</b>	WB, IHC-P, IHC-Fr, FCM
<b>Reactivity</b>	Mouse, Rat

References ( 1 )

Package

100 µg

## Applications

## Application Note

\*Optimal dilutions/concentrations should be determined by the researcher.

Suggested dilution	Recommended dilution
WB	0.1-0.5µg/ml
IHC-P	0.5-1µg/ml
IHC-Fr	0.5-1µg/ml
FCM	1-3µg/1x10 <sup>6</sup> cells

Not tested in other applications.

Calculated MW 39 kDa. ( [Note](#) )

## Properties

<b>Form</b>	Liquid
<b>Buffer</b>	0.1% Na <sub>2</sub> HPO <sub>4</sub> , 0.45% NaCl, 2.5% BSA
<b>Preservative</b>	0.025% Sodium azide
<b>Storage</b>	Store as concentrated solution. Centrifuge briefly prior to opening vial. For short-term storage (1-2 weeks), store at 4°C. For long-term storage, aliquot and store at -20°C or below. Avoid multiple freeze-thaw cycles.
<b>Concentration</b>	500 µg/ml (Please refer to the vial label for the specific concentration.)
<b>Immunogen</b>	A synthetic peptide corresponding to a sequence at the C-terminus of mouse SLC10A1 (296-336aa EGLLFIIFRCYLKIKPQKDQTKITYKAAATEDATPAALEK), different from the related human sequence by eighteen amino acids, and from the related rat sequence by three amino acids.
<b>Purification</b>	Purified by antigen-affinity chromatography
<b>Conjugation</b>	Unconjugated



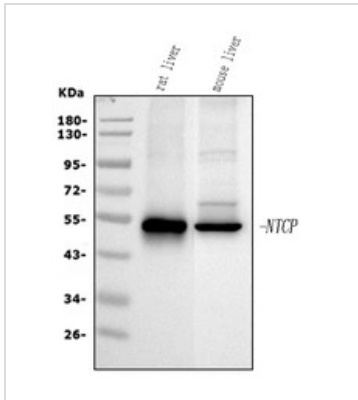
For full product information, images and publications, please visit our [website](#).

For laboratory research use only. Not for any clinical, therapeutic, or diagnostic use in humans or animals. Not for animal or human consumption.

**Note**

Purchasers shall not, and agree not to enable third parties to, analyze, copy, reverse engineer or otherwise attempt to determine the structure or sequence of the product.

## DATA IMAGES

**GTX17693 WB Image**

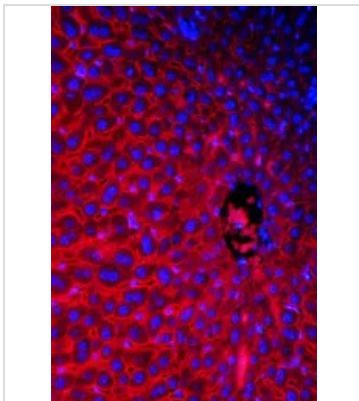
WB analysis of various samples using GTX17693 NTCP antibody.

Lane 1: rat liver tissue lysates

Lane 2: mouse liver tissue lysates

Dilution: 0.5 µg/mL

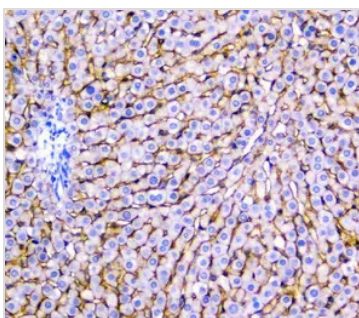
Loading : 30µg of sample under reducing conditions

**GTX17693 IHC-P Image**

IHC-P analysis of mouse liver tissue using GTX17693 NTCP antibody.

Antigen retrieval: Heat-mediated antigen retrieval was performed in citrate buffer (pH6, epitope retrieval solution) for 20 mins

Dilution: 1µg/ml

**GTX17693 IHC-P Image**

IHC-P analysis of rat liver tissue using GTX17693 NTCP antibody.

Antigen retrieval: Heat-mediated antigen retrieval was performed in EDTA buffer (pH 8.0, epitope retrieval solution) for 20 mins

Dilution: 1µg/ml



For full product information, images and publications, please visit our [website](#).