

Rabbit Anti-Human kappa light chain antibody [IGKC/1999R]

Cat. No. GTX17709

Host	Rabbit
Clonality	Monoclonal
Isotype	IgG
Applications	WB, IHC-P, Protein Array
Reactivity	Human

Package
100 µg

Applications

Application Note

*Optimal dilutions/concentrations should be determined by the researcher.

Suggested dilution	Recommended dilution
WB	Assay dependent
IHC-P	1-2µg/ml for 30 min at RT
Protein Array	Assay dependent

Note : Staining of formalin-fixed tissues requires heating tissue sections in 10mM Tris with 1mM EDTA, pH 9.0, for 45 min at 95°C followed by cooling at RT for 20 minutes.

Not tested in other applications.

Product Note This MAb is specific to kappa light chain of immunoglobulin and shows no cross-reaction with lambda light chain or any of the five heavy chains.

Properties

Form	Liquid
Buffer	PBS, 0.05% BSA
Preservative	0.05% Sodium azide
Storage	Store as concentrated solution. Centrifuge briefly prior to opening vial. For short-term storage (1-2 weeks), store at 4°C. For long-term storage, aliquot and store at -20°C or below. Avoid multiple freeze-thaw cycles.
Concentration	0.2 mg/ml (Please refer to the vial label for the specific concentration.)
Immunogen	Recombinant full-length human Ig kappa light chain (IGKC) protein
Purification	Protein A purified
Conjugation	Unconjugated



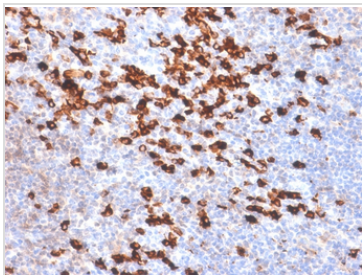
For full product information, images and publications, please visit our [website](#).

For laboratory research use only. Not for any clinical, therapeutic, or diagnostic use in humans or animals. Not for animal or human consumption.

Note

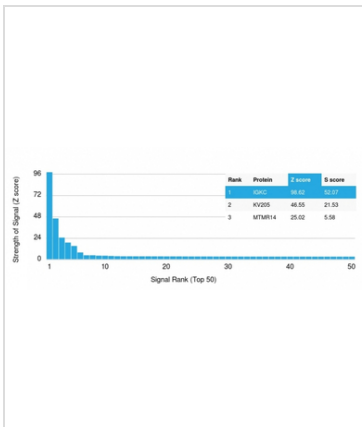
Purchasers shall not, and agree not to enable third parties to, analyze, copy, reverse engineer or otherwise attempt to determine the structure or sequence of the product.

DATA IMAGES



GTX17709 IHC-P Image

IHC-P analysis of human tonsil tissue using GTX17709 Human kappa Light chain antibody [IGKC/1999R].



GTX17709 Protein Array Image

Analysis of Protein Array containing more than 19,000 full-length human proteins using Kappa Light Chain (IGKC) Rabbit Recombinant Monoclonal Antibody (IGKC/1999R). Z- and S- Score: The Z-score represents the strength of a signal that a monoclonal antibody produces when binding to a particular protein on the HuProt™ array. Z-scores are described in units of standard deviations (SD's) above the mean value of all signals generated on that array. If targets on HuProt™ are arranged in descending order of the Z-score, the S-score is the difference (also in units of SD's) between the Z-score. S-score therefore represents the relative target specificity of a Monoclonal Antibody to its intended target. A Monoclonal Antibody is considered to be specific to its intended target if the Monoclonal Antibody has an S-score of at least 2.5. For example, if a Monoclonal Antibody binds to protein X with a Z-score of 43 and to protein Y with a Z-score of 14, then the S-score for the binding of that Monoclonal Antibody to protein X is equal to 29.



For full product information, images and publications, please visit our [website](#).