

FABP4 antibody

Cat. No. GTX17718

Host	Chicken
Clonality	Polyclonal
Isotype	IgY
Applications	WB, ELISA
Reactivity	Human, Mouse, Rat

Package
500 µg

Applications

Application Note

ELISA: 1/1000 - 1/5000. WB: 1/1000 - 1/5000. Detects a band of approximately 15 kDa. Optimal dilutions/concentrations should be determined by the end user.

Calculated MW 15 kDa. ([Note](#))

Properties

Form	Liquid
Buffer	PBS
Preservative	0.02% Sodium azide
Storage	Store as concentrated solution. Centrifuge briefly prior to opening vial. For short-term storage (1-2 weeks), store at 4°C. For long-term storage, aliquot and store at -20°C or below. Avoid multiple freeze-thaw cycles.
Concentration	1 mg/ml (Please refer to the vial label for the specific concentration.)
Immunogen	Synthetic peptides: FDEVTADDRKVK and KWDGKSTTIKRR, corresponding to amino acids 70-81 and 96-107 of ALBP.
Purification	Protein L purified
Conjugation	Unconjugated

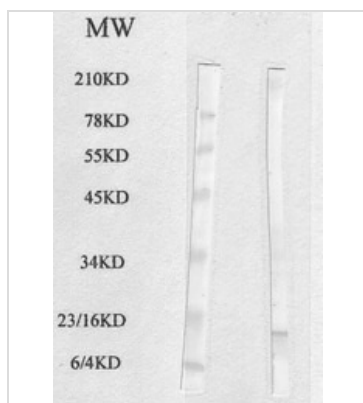
Note

For laboratory research use only. Not for any clinical, therapeutic, or diagnostic use in humans or animals. Not for animal or human consumption.

Purchasers shall not, and agree not to enable third parties to, analyze, copy, reverse engineer or otherwise attempt to determine the structure or sequence of the product.



For full product information, images and publications, please visit our [website](#).

DATA IMAGES

GTX17718 WB Image

Western blot analysis using mouse epididymal fat cell lysate



For full product information, images and publications, please visit our [website](https://www.genetex.com).