

Vimentin antibody [VM452]

Cat. No. GTX17723

Host	Mouse
Clonality	Monoclonal
Isotype	IgG1
Applications	WB, IHC-P, FCM, Protein Array
Reactivity	Human, Goat, Bovine, Cat, Dog, Chicken, Pig

Package
100 µg

Applications

Application Note

*Optimal dilutions/concentrations should be determined by the researcher.

Suggested dilution	Recommended dilution
WB	1-2µg/ml
IHC-P	1-2µg/ml for 30 minutes at RT
FCM	1-2µg/10 ⁶ cells
Protein Array	Assay dependent

Note : Staining of formalin-fixed tissues requires heating tissue sections in 10mM Tris with 1mM EDTA, pH 9.0, for 45 min at 95°C followed by cooling at RT for 20 minutes.

Not tested in other applications.

Calculated MW 54 kDa. ([Note](#))

Product Note

This MAb reacts with a 58kDa protein identified as vimentin. It shows no cross-reaction with other closely related intermediate filament proteins (IFP's) such as desmin, keratin, neurofilament, and glial fibrillary acid protein. We do not recommend use of this product for Mouse,Rat samples.

Properties

Form	Liquid
Buffer	PBS, 0.05% BSA
Preservative	0.05% Sodium azide
Storage	Store as concentrated solution. Centrifuge briefly prior to opening vial. For short-term storage (1-2 weeks), store at 4°C. For long-term storage, aliquot and store at -20°C or below. Avoid multiple freeze-thaw cycles.
Concentration	0.2 mg/ml (Please refer to the vial label for the specific concentration.)
Immunogen	Recombinant full-length human vimentin protein
Purification	Protein A/G purified



For full product information, images and publications, please visit our [website](#).

Date 2025 / 06 / 18 Page 1 of 2

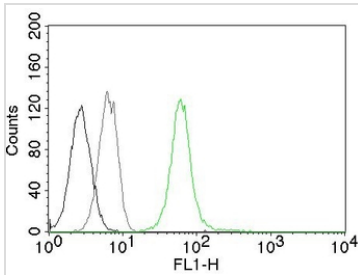
Conjugation

Unconjugated

Note

For laboratory research use only. Not for any clinical, therapeutic, or diagnostic use in humans or animals. Not for animal or human consumption.

Purchasers shall not, and agree not to enable third parties to, analyze, copy, reverse engineer or otherwise attempt to determine the structure or sequence of the product.

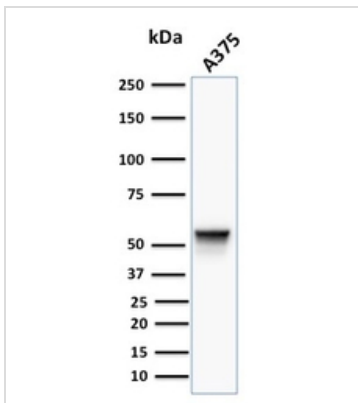
DATA IMAGES

GTX17723 FCM Image

FACS analysis of Jurkat cells using GTX17723 Vimentin antibody [VM452].

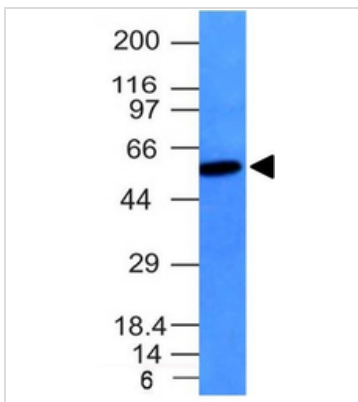
Black : Blank

Grey : Isotype Control

Green : Primary antibody


GTX17723 WB Image

WB analysis of A375 cell lysate using GTX17723 Vimentin antibody [VM452].


GTX17723 WB Image

WB analysis of Raji cell lysate using GTX17723 Vimentin antibody [VM452].


 For full product information, images and publications, please visit our [website](https://www.genetex.com).