

OCT2 antibody [OCT2/2137]

Cat. No. GTX17727

Host	Mouse
Clonality	Monoclonal
Isotype	IgG1
Applications	WB, IHC-P, ELISA, Protein Array
Reactivity	Human

Package
100 µg

Applications

Application Note

*Optimal dilutions/concentrations should be determined by the researcher.

Suggested dilution	Recommended dilution
WB	Assay dependent
IHC-P	Assay dependent
ELISA	Assay dependent
Protein Array	Assay dependent

Note : For ELISA coating, recommend using BSA-free format (please contact us for PBS only format).

Not tested in other applications.

Calculated MW 51 kDa. ([Note](#))

Properties

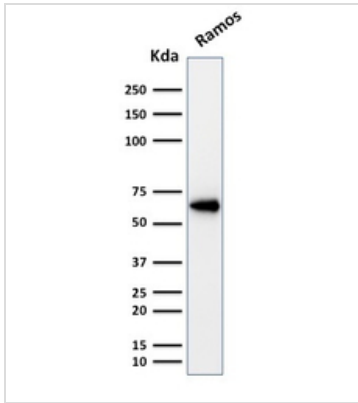
Form	Liquid
Buffer	PBS, 0.05% BSA
Preservative	0.05% Sodium azide
Storage	Store as concentrated solution. Centrifuge briefly prior to opening vial. For short-term storage (1-2 weeks), store at 4°C. For long-term storage, aliquot and store at -20°C or below. Avoid multiple freeze-thaw cycles.
Concentration	0.2 mg/ml (Please refer to the vial label for the specific concentration.)
Immunogen	Recombinant fragment of human OCT2 protein (around aa 112-297) (exact sequence is proprietary)
Purification	Protein A/G purified
Conjugation	Unconjugated

For full product information, images and publications, please visit our [website](#).

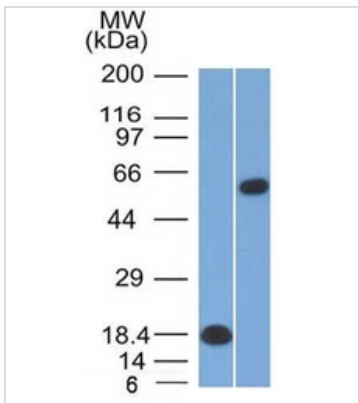
For laboratory research use only. Not for any clinical, therapeutic, or diagnostic use in humans or animals. Not for animal or human consumption.

Note

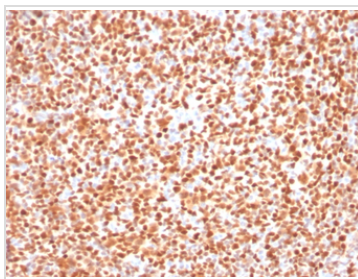
Purchasers shall not, and agree not to enable third parties to, analyze, copy, reverse engineer or otherwise attempt to determine the structure or sequence of the product.

DATA IMAGES

GTx17727 WB Image

WB analysis of Ramos cell lysate using GTx17727 OCT2 antibody [OCT2/2137].


GTx17727 WB Image

WB analysis of (A) recombinant OCT2 protein (B) Daudi cell lysates using GTx17727 OCT2 antibody [OCT2/2137].


GTx17727 IHC-P Image

IHC-P analysis of human tonsil tissue using GTx17727 OCT2 antibody [OCT2/2137].



For full product information, images and publications, please visit our [website](https://www.genetex.com).