

## SPTBN2 antibody [SPTBN2/1778]

## Cat. No. GTX17813

<b>Host</b>	Mouse
<b>Clonality</b>	Monoclonal
<b>Isotype</b>	IgG1
<b>Applications</b>	WB, ICC/IF, IHC-P, ELISA, Protein Array
<b>Reactivity</b>	Human

Package  
100 µg

## Applications

## Application Note

\*Optimal dilutions/concentrations should be determined by the researcher.

Suggested dilution	Recommended dilution
WB	1-2µg/ml
ICC/IF	1-2µg/ml
IHC-P	1-2µg/ml for 30 minutes at RT
ELISA	2-4µg/ml (for coating)
Protein Array	Assay dependent

**Note : Staining of formalin-fixed tissues requires heating tissue sections in 10mM Tris with 1mM EDTA, pH 9.0, for 45 min at 95°C followed by cooling at RT for 20 minutes.**

**For ELISA coating, recommend using BSA-free format (please contact us for PBS only format).**

Not tested in other applications.

**Calculated MW** 271 kDa. ([Note](#))

## Properties

<b>Form</b>	Liquid
<b>Buffer</b>	PBS, 0.05% BSA
<b>Preservative</b>	0.05% Sodium azide
<b>Storage</b>	Store as concentrated solution. Centrifuge briefly prior to opening vial. For short-term storage (1-2 weeks), store at 4°C. For long-term storage, aliquot and store at -20°C or below. Avoid multiple freeze-thaw cycles.
<b>Concentration</b>	0.2 mg/ml (Please refer to the vial label for the specific concentration.)
<b>Immunogen</b>	Recombinant fragment (around aa356-475) of human SPTBN2 protein (exact sequence is proprietary)
<b>Purification</b>	Protein A/G purified
<b>Conjugation</b>	Unconjugated



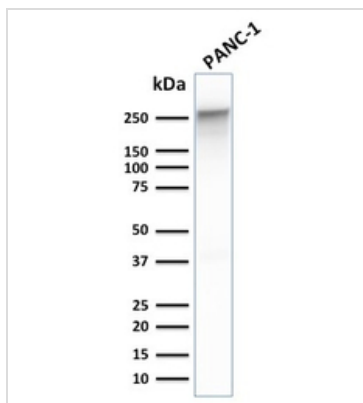
For full product information, images and publications, please visit our [website](#).

For laboratory research use only. Not for any clinical, therapeutic, or diagnostic use in humans or animals. Not for animal or human consumption.

**Note**

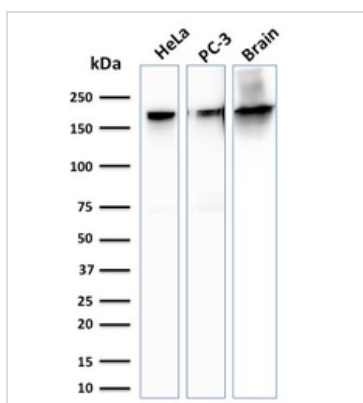
Purchasers shall not, and agree not to enable third parties to, analyze, copy, reverse engineer or otherwise attempt to determine the structure or sequence of the product.

DATA IMAGES



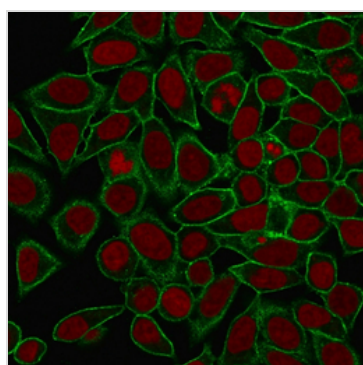
**GTX17813 WB Image**

WB analysis of PANC-1 cell lysate using GTX17813 SPTBN2 antibody [SPTBN2/1778].



**GTX17813 WB Image**

WB analysis of HeLa, PC-3 cells and, brain tissue lysates using GTX17813 SPTBN2 antibody [SPTBN2/1778].



**GTX17813 ICC/IF Image**

ICC/IF analysis of MeOH-fixed HeLa cells using GTX17813 SPTBN2 antibody [SPTBN2/1778].

Green : Primary antibody

Red : nucleus



For full product information, images and publications, please visit our [website](#).