

SPTBN2 antibody [SPTBN2/1778]

Cat. No. GTX17813

| | |
|---------------------|---|
| Host | Mouse |
| Clonality | Monoclonal |
| Isotype | IgG1 |
| Applications | WB, ICC/IF, IHC-P, ELISA, Protein Array |
| Reactivity | Human |

Package
100 µg

Applications

Application Note

*Optimal dilutions/concentrations should be determined by the researcher.

| Suggested dilution | Recommended dilution |
|--------------------|-------------------------------|
| WB | 1-2µg/ml |
| ICC/IF | 1-2µg/ml |
| IHC-P | 1-2µg/ml for 30 minutes at RT |
| ELISA | 2-4µg/ml (for coating) |
| Protein Array | Assay dependent |

Note : Staining of formalin-fixed tissues requires heating tissue sections in 10mM Tris with 1mM EDTA, pH 9.0, for 45 min at 95°C followed by cooling at RT for 20 minutes.

For ELISA coating, recommend using BSA-free format (please contact us for PBS only format).

Not tested in other applications.

Calculated MW 271 kDa. ([Note](#))

Properties

| | |
|----------------------|--|
| Form | Liquid |
| Buffer | PBS, 0.05% BSA |
| Preservative | 0.05% Sodium azide |
| Storage | Store as concentrated solution. Centrifuge briefly prior to opening vial. For short-term storage (1-2 weeks), store at 4°C. For long-term storage, aliquot and store at -20°C or below. Avoid multiple freeze-thaw cycles. |
| Concentration | 0.2 mg/ml (Please refer to the vial label for the specific concentration.) |
| Immunogen | Recombinant fragment (around aa356-475) of human SPTBN2 protein (exact sequence is proprietary) |
| Purification | Protein A/G purified |
| Conjugation | Unconjugated |



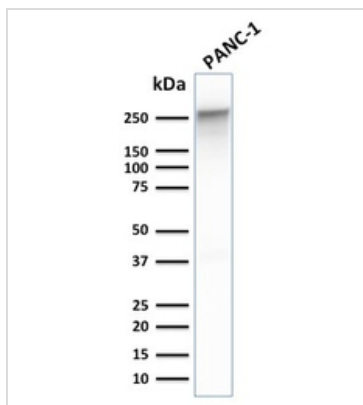
For full product information, images and publications, please visit our [website](#).

For laboratory research use only. Not for any clinical, therapeutic, or diagnostic use in humans or animals. Not for animal or human consumption.

Note

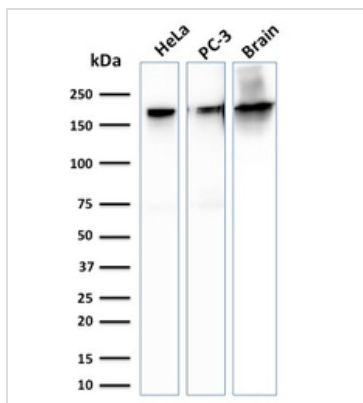
Purchasers shall not, and agree not to enable third parties to, analyze, copy, reverse engineer or otherwise attempt to determine the structure or sequence of the product.

DATA IMAGES



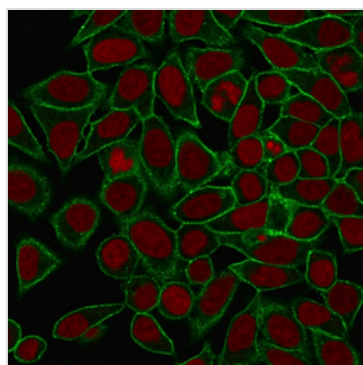
GTX17813 WB Image

WB analysis of PANC-1 cell lysate using GTX17813 SPTBN2 antibody [SPTBN2/1778].



GTX17813 WB Image

WB analysis of HeLa, PC-3 cells and, brain tissue lysates using GTX17813 SPTBN2 antibody [SPTBN2/1778].



GTX17813 ICC/IF Image

ICC/IF analysis of MeOH-fixed HeLa cells using GTX17813 SPTBN2 antibody [SPTBN2/1778].

Green : Primary antibody

Red : nucleus



For full product information, images and publications, please visit our [website](#).