

Caspase 6 antibody [3F52]

Cat. No. GTX17822

Host	Mouse
Clonality	Monoclonal
Isotype	IgG1
Applications	WB, IP
Reactivity	Human

Package
250 µl

Applications

Application Note

*Optimal dilutions/concentrations should be determined by the researcher.

Suggested dilution	Recommended dilution
WB	1µg/ml for 2 hours at RT
IP	2µg antibody/mg protein lysate (Use Protein G)

Not tested in other applications.

Calculated MW 33 kDa. ([Note](#))

Properties

Form	Liquid
Buffer	PBS, 0.2% BSA
Preservative	0.09% Sodium azide
Storage	Store as concentrated solution. Centrifuge briefly prior to opening vial. For short-term storage (1-2 weeks), store at 4°C. For long-term storage, aliquot and store at -20°C or below. Avoid multiple freeze-thaw cycles.
Concentration	Batch dependent (Please refer to the vial label for the specific concentration.)
Immunogen	Recombinant protein corresponding to human caspase 6 prodomain. Epitope: Caspase 6 prodomain.
Purification	Protein G purified
Conjugation	Unconjugated

Note

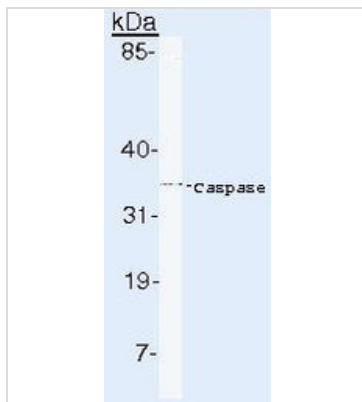
For laboratory research use only. Not for any clinical, therapeutic, or diagnostic use in humans or animals. Not for animal or human consumption.

Purchasers shall not, and agree not to enable third parties to, analyze, copy, reverse engineer or otherwise attempt to determine the structure or sequence of the product.



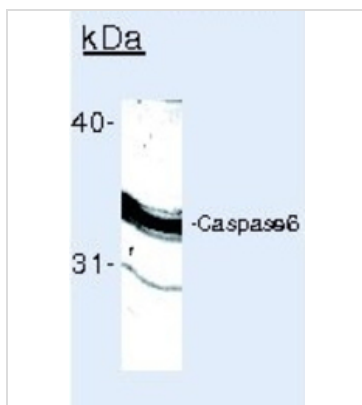
For full product information, images and publications, please visit our [website](#).

DATA IMAGES



GTX17822 WB Image

WB analysis of Jurkat cell lysate using GTX17822 Caspase 6 antibody [3F52].



GTX17822 IP Image

IP analysis of Jurkat cell lysate using GTX17822 Caspase 6 antibody [3F52].



For full product information, images and publications, please visit our [website](https://www.genetex.com).