

WDR9.3 antibody

Cat. No. GTX17907

Host	Chicken
Clonality	Polyclonal
Isotype	IgY
Applications	WB
Reactivity	Human

Package
250 µg

Applications

Application Note

WB: 1/500 - 1/5000. Detects a band of approximately 57 kDa. Optimal dilutions/concentrations should be determined by the end user.

Calculated MW 263 kDa. ([Note](#))

Properties

Form	Liquid
Buffer	PBS
Preservative	0.02% Sodium azide
Storage	Store as concentrated solution. Centrifuge briefly prior to opening vial. For short-term storage (1-2 weeks), store at 4°C. For long-term storage, aliquot and store at -20°C or below. Avoid multiple freeze-thaw cycles.
Concentration	1 mg/ml (Please refer to the vial label for the specific concentration.)
Immunogen	Recombinant full length protein (Human).
Conjugation	Unconjugated

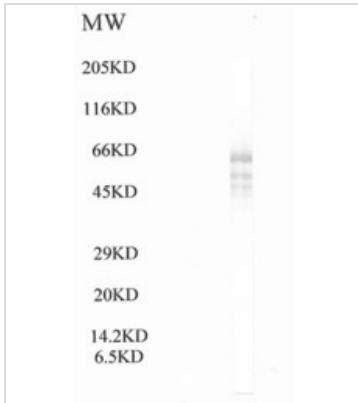
Note

For laboratory research use only. Not for any clinical, therapeutic, or diagnostic use in humans or animals. Not for animal or human consumption.

Purchasers shall not, and agree not to enable third parties to, analyze, copy, reverse engineer or otherwise attempt to determine the structure or sequence of the product.



For full product information, images and publications, please visit our [website](#).

DATA IMAGES

GTX17907 WB Image


For full product information, images and publications, please visit our [website](#).