

HSP27 (phospho Ser82) antibody

Cat. No. GTX17937

Host	Rabbit
Clonality	Polyclonal
Isotype	IgG
Applications	WB, IHC-P, FCM
Reactivity	Human

Package

50 µl

Applications

Application Note

*Optimal dilutions/concentrations should be determined by the researcher.

Suggested dilution	Recommended dilution
WB	1:500
IHC-P	1:20-1:200
FCM	1:20

Not tested in other applications.

Calculated MW 23 kDa. ([Note](#))

Properties

Form	Liquid
Buffer	PBS, 0.1% BSA, 50% Glycerol
Preservative	0.05% Sodium azide
Storage	Store as concentrated solution. Centrifuge briefly prior to opening vial. For short-term storage (1-2 weeks), store at 4°C. For long-term storage, aliquot and store at -20°C or below. Avoid multiple freeze-thaw cycles.
Concentration	Batch dependent (Please refer to the vial label for the specific concentration.)
Immunogen	The antiserum was produced against a chemically synthesized phosphopeptide derived from a region of human HSP27 that contains serine 82.
Purification	Purified by antigen-affinity chromatography
Conjugation	Unconjugated

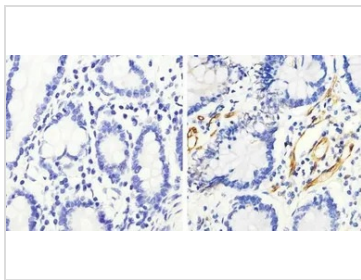
Note

For laboratory research use only. Not for any clinical, therapeutic, or diagnostic use in humans or animals. Not for animal or human consumption.

Purchasers shall not, and agree not to enable third parties to, analyze, copy, reverse engineer or otherwise attempt to determine the structure or sequence of the product.



For full product information, images and publications, please visit our [website](#).

DATA IMAGES

GTX17937 IHC-P Image

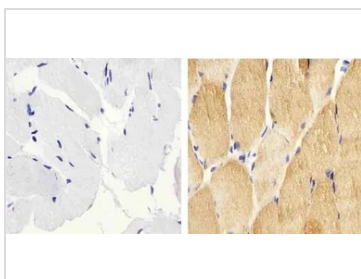
IHC-P analysis of human small intestine tissue using GTX17937 HSP27 (phospho Ser82) antibody.

Right : Primary antibody

Left : Negative control without primary antibody

Antigen retrieval : 10mM sodium citrate (pH 6.0), microwaved for 8-15 min

Dilution : 1:100


GTX17937 IHC-P Image

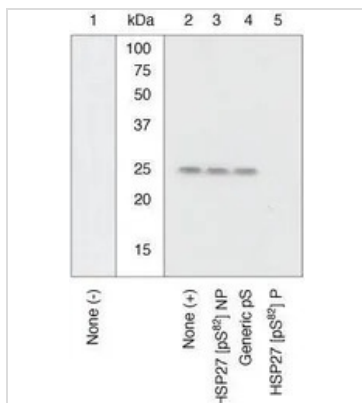
IHC-P analysis of human skeletal muscle tissue using GTX17937 HSP27 (phospho Ser82) antibody.

Right : Primary antibody

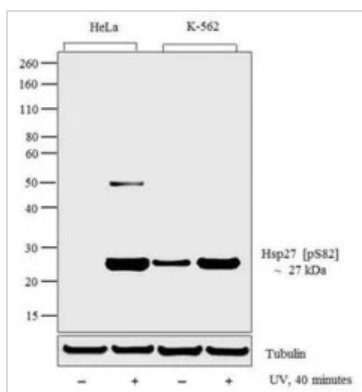
Left : Negative control without primary antibody

Antigen retrieval : 10mM sodium citrate (pH 6.0), microwaved for 8-15 min

Dilution : 1:100


GTX17937 WB Image

WB analysis of samples using GTX17937 HSP27 (phospho Ser82) antibody. The data show that only the immunogen phosphopeptide blocks the signal, demonstrating the specificity of the antibody.


GTX17937 WB Image

WB analysis of HeLa (lane1), HeLa exposed for 40 minutes with UV (lane2), K-562 (lane3), K-562 exposed for 40 minutes with UV (lane4) lysate using GTX17937 HSP27 (phospho Ser82) antibody.

Loading : 20 µg

Dilution : 1:500



For full product information, images and publications, please visit our [website](https://www.genetex.com).