

SHP2 (phospho Ser576) antibody

Cat. No. GTX17940

Host	Rabbit
Clonality	Polyclonal
Isotype	IgG
Applications	WB, ICC/IF
Reactivity	Human, Mouse

Package

50 µl

Applications

Application Note

*Optimal dilutions/concentrations should be determined by the researcher.

Suggested dilution	Recommended dilution
WB	Assay dependent
ICC/IF	1:250

Not tested in other applications.

Calculated MW 68 kDa. ([Note](#))

Properties

Form	Liquid
Buffer	PBS, 0.1% BSA, 50% Glycerol
Preservative	0.05% Sodium azide
Storage	Store as concentrated solution. Centrifuge briefly prior to opening vial. For short-term storage (1-2 weeks), store at 4°C. For long-term storage, aliquot and store at -20°C or below. Avoid multiple freeze-thaw cycles.
Concentration	Batch dependent (Please refer to the vial label for the specific concentration.)
Immunogen	The antiserum was produced against a chemically synthesized phosphopeptide derived from the region of human SHP2 that contains serine 576. The sequence is conserved in mouse, rat and chicken.
Purification	Purified by antigen-affinity chromatography
Conjugation	Unconjugated

Note

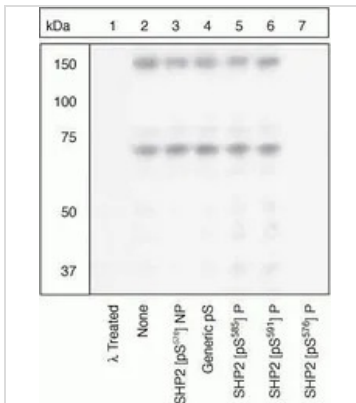
For laboratory research use only. Not for any clinical, therapeutic, or diagnostic use in humans or animals. Not for animal or human consumption.

Purchasers shall not, and agree not to enable third parties to, analyze, copy, reverse engineer or otherwise attempt to determine the structure or sequence of the product.



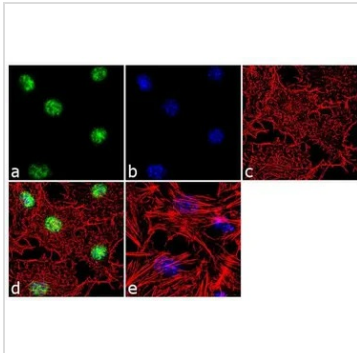
For full product information, images and publications, please visit our [website](#).

DATA IMAGES



GTx17940 WB Image

WB (peptide competition) analysis of HEK293 cells treated with 100 ng/mL PMA for 15 minutes using GTx17940 SHP2 (phospho Ser576) antibody prior incubated with the non-phosphopeptide corresponding to the phosphopeptide immunogen (Lane 3), a generic phosphoserine-containing peptide (Lane 4), the phosphopeptide corresponding to SHP2 [pS585] (Lane 5), the phosphopeptide corresponding to SHP2 [pS591] (Lane 6), or the phosphopeptide immunogen (Lane 7) control. The data show that only the immunogen phosphopeptide blocks the signal, demonstrating the specificity of the antibody. The membrane treated with phosphatase (Lane 1) eliminates the signal further verifying that the antibody is phospho-specific.



GTx17940 ICC/IF Image

ICC/IF analysis of NIH-3T3 cells using GTx17940 SHP2 (phospho Ser576) antibody. Panel e is a no primary antibody control.

Green : Primary antibody

Blue : Nuclei

Red : Actin

Fixation : 4% paraformaldehyde

Permeabilization : 0.1% Triton X-100 for 10 minutes

Dilution : 1:250 dilution in 0.1% BSA and incubated for 3 hours at room temperature



For full product information, images and publications, please visit our [website](https://www.genetex.com).