

## IKK alpha (phospho Ser176/Ser180) antibody

Cat. No. GTX17943

Host	Rabbit
Clonality	Polyclonal
Isotype	IgG
Applications	WB, ICC/IF, FCM, ChIP assay
Reactivity	Human

References ( 1 )

Package

50 µl

## Applications

## Application Note

\*Optimal dilutions/concentrations should be determined by the researcher.

Suggested dilution	Recommended dilution
WB	1:250
ICC/IF	1:250
FCM	1:20
ChIP assay	10µl

Not tested in other applications.

Calculated MW 85 kDa. ( [Note](#) )

## Properties

Form	Liquid
Buffer	PBS, 0.1% BSA
Preservative	0.05% Sodium azide
Storage	Store as concentrated solution. Centrifuge briefly prior to opening vial. For short-term storage (1-2 weeks), store at 4°C. For long-term storage, aliquot and store at -20°C or below. Avoid multiple freeze-thaw cycles.
Concentration	Batch dependent (Please refer to the vial label for the specific concentration.)
Immunogen	The antiserum was produced against a chemically synthesized phosphopeptide derived from the region of human IKK-alpha that contains serine 176 and serine 180.
Purification	Purified IgG
Conjugation	Unconjugated

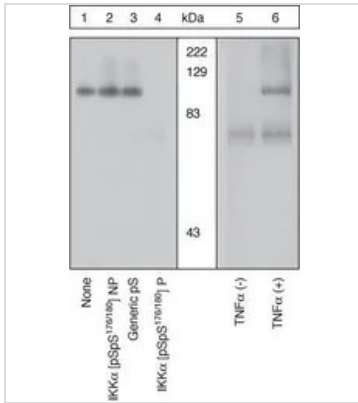
For full product information, images and publications, please visit our [website](#).

For laboratory research use only. Not for any clinical, therapeutic, or diagnostic use in humans or animals. Not for animal or human consumption.

#### Note

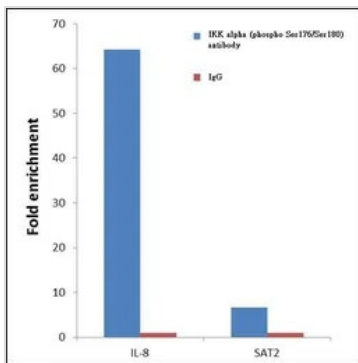
Purchasers shall not, and agree not to enable third parties to, analyze, copy, reverse engineer or otherwise attempt to determine the structure or sequence of the product.

#### DATA IMAGES



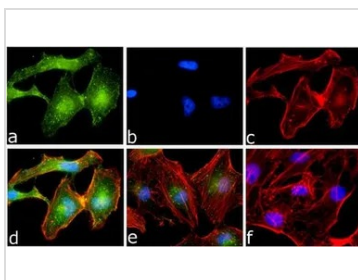
#### GTX17943 WB Image

WB analysis of Jurkat cells stimulated with TNF-alpha (Lane 1-4, 6) or untreated (Lane 5) using GTX17943 IKK alpha (phospho Ser176/Ser180) antibody.  
The primary antibody was prior incubated with the non-phosphopeptide corresponding to the immunogen (Lane 2), a generic phosphoserine containing peptide (Lane 3), or the phosphopeptide immunogen (Lane 4)  
Dilution : 1:500



#### GTX17943 ChIP assay Image

ChIP analysis of 2 million HeLa cells treated with 50ng/ml of TNF alpha for one hour using GTX17943 IKK alpha (phospho Ser176/Ser180) antibody. Normal Rabbit IgG was used as a negative IP control. The precipitated DNA was detected by PCR with primer set targeting to the promoter of IL-8 gene and the inactive SAT2 used as negative control target.



#### GTX17943 ICC/IF Image

ICC/IF analysis of HeLa cells treated for 20 minutes with 50ng/ml of TNF-Alpha using GTX17943 IKK alpha (phospho Ser176/Ser180) antibody. Panel e is untreated cell with no signal. Panel f represents control cells with no primary antibody to assess background.

Fixation : 4% paraformaldehyde

Permeabilization : 0.25% Triton X-100 for 10 minutes

Dilution : 1:250 dilution in 0.1% BSA and incubated for 3 hours at room temperature



For full product information, images and publications, please visit our [website](https://www.genetex.com).