

Emerin antibody [EMD/2168]

Cat. No. GTX17952

Host	Mouse
Clonality	Monoclonal
Isotype	IgG2b
Applications	WB, IHC-P, Protein Array
Reactivity	Human

Package
100 µg

Applications

Application Note

*Optimal dilutions/concentrations should be determined by the researcher.

Suggested dilution	Recommended dilution
WB	1-2µg/ml
IHC-P	1-2µg/ml for 30 min at RT
Protein Array	Assay dependent

Note : Staining of formalin-fixed tissues requires heating tissue sections in 10mM Tris with 1mM EDTA, pH 9.0, for 45 min at 95°C followed by cooling at RT for 20 minutes.

Not tested in other applications.

Calculated MW 29 kDa. ([Note](#))

Properties

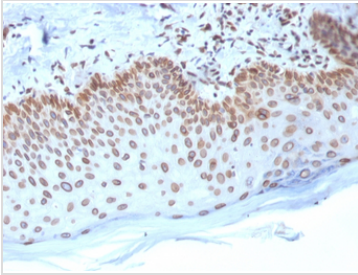
Form	Liquid
Buffer	PBS, 0.05% BSA
Preservative	0.05% Sodium azide
Storage	Store as concentrated solution. Centrifuge briefly prior to opening vial. For short-term storage (1-2 weeks), store at 4°C. For long-term storage, aliquot and store at -20°C or below. Avoid multiple freeze-thaw cycles.
Concentration	0.2 mg/ml (Please refer to the vial label for the specific concentration.)
Immunogen	Recombinant human Emerin protein fragment (around aa 56-167) (exact sequence is proprietary)
Purification	Protein A/G purified
Conjugation	Unconjugated

For full product information, images and publications, please visit our [website](#).

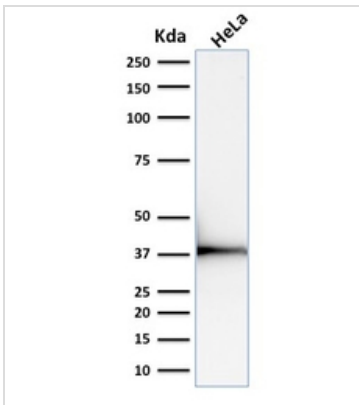
For laboratory research use only. Not for any clinical, therapeutic, or diagnostic use in humans or animals. Not for animal or human consumption.

Note

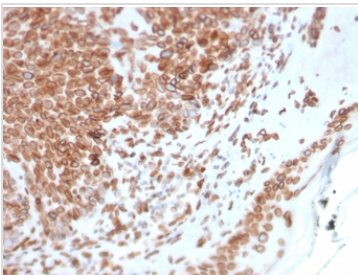
Purchasers shall not, and agree not to enable third parties to, analyze, copy, reverse engineer or otherwise attempt to determine the structure or sequence of the product.

DATA IMAGES

GTX17952 IHC-P Image

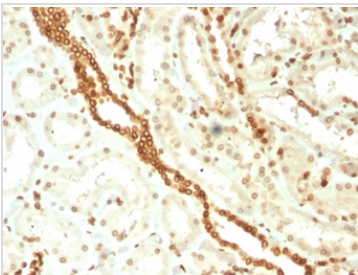
IHC-P analysis of human breast carcinoma tissue using GTX17952 Emerin antibody [EMD/2168].


GTX17952 WB Image

WB analysis of HeLa cell lysate using GTX17952 Emerin antibody [EMD/2168].


GTX17952 IHC-P Image

IHC-P analysis of human basal cell carcinoma tissue using GTX17952 Emerin antibody [EMD/2168].


GTX17952 IHC-P Image

IHC-P analysis of human renal cell carcinoma tissue using GTX17952 Emerin antibody [EMD/2168].



For full product information, images and publications, please visit our [website](#).