

## BOB1 antibody [BOB1/2424]

Cat. No. GTX17982

|                     |                                       |
|---------------------|---------------------------------------|
| <b>Host</b>         | Mouse                                 |
| <b>Clonality</b>    | Monoclonal                            |
| <b>Isotype</b>      | IgG2b                                 |
| <b>Applications</b> | WB, ICC/IF, IHC-P, FCM, Protein Array |
| <b>Reactivity</b>   | Human                                 |

Package  
100 µg

## Applications

## Application Note

\*Optimal dilutions/concentrations should be determined by the researcher.

| Suggested dilution | Recommended dilution      |
|--------------------|---------------------------|
| WB                 | 1-2µg/ml                  |
| ICC/IF             | 1-2µg/ml                  |
| IHC-P              | 1-2µg/ml for 30 min at RT |
| FCM                | 1-2µg/ml                  |
| Protein Array      | Assay dependent           |

**Note : Staining of formalin-fixed tissues requires heating tissue sections in 10mM Tris with 1mM EDTA, pH 9.0, for 45 min at 95°C followed by cooling at RT for 20 minutes.**

Not tested in other applications.

**Calculated MW** 27 kDa. ( [Note](#) )

## Properties

|                      |  |
|----------------------|--|
| <b>Form</b>          | Liquid   |
| <b>Buffer</b>        | PBS, 0.05% BSA   |
| <b>Preservative</b>  | 0.05% Sodium azide   |
| <b>Storage</b>       | Store as concentrated solution. Centrifuge briefly prior to opening vial. For short-term storage (1-2 weeks), store at 4°C. For long-term storage, aliquot and store at -20°C or below. Avoid multiple freeze-thaw cycles. |
| <b>Concentration</b> | 0.2 mg/ml (Please refer to the vial label for the specific concentration.)   |
| <b>Immunogen</b>     | Recombinant fragment (around aa 148-255) of human BOB1 (POU2AF1) protein (exact sequence is proprietary)   |
| <b>Purification</b>  | Protein A/G purified   |
| <b>Conjugation</b>   | Unconjugated   |



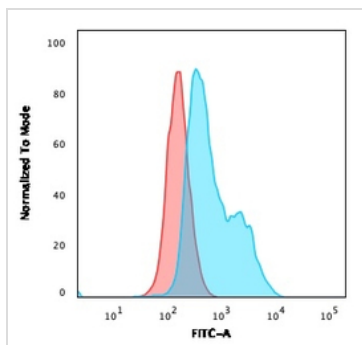
For full product information, images and publications, please visit our [website](#).

For laboratory research use only. Not for any clinical, therapeutic, or diagnostic use in humans or animals. Not for animal or human consumption.

## Note

Purchasers shall not, and agree not to enable third parties to, analyze, copy, reverse engineer or otherwise attempt to determine the structure or sequence of the product.

## DATA IMAGES

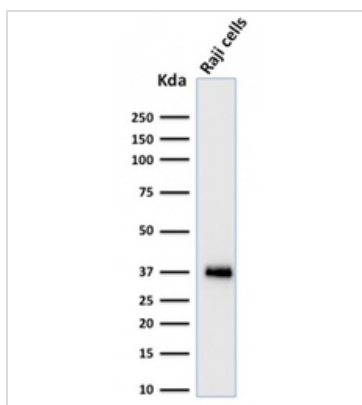


### GTx17982 FCM Image

FACS analysis of paraformaldehyde-fixed Raji cells using GTx17982 BOB1 antibody [BOB1/2424].

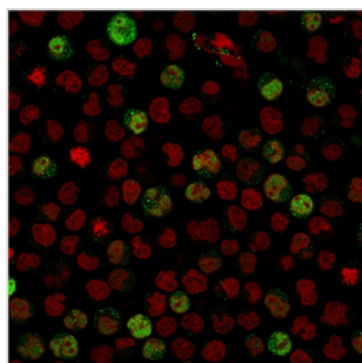
Blue : Primary antibody

Red : Isotype control



### GTx17982 WB Image

WB analysis of Raji cell lysate using GTx17982 BOB1 antibody [BOB1/2424].



### GTx17982 ICC/IF Image

ICC/IF analysis of paraformaldehyde-fixed Raji cells using GTx17982 BOB1 antibody [BOB1/2424].

Green : Primary antibody

Red : nucleus



For full product information, images and publications, please visit our [website](https://www.genetex.com).