

GluT1 antibody [GLUT1/2476]

Cat. No. GTX17991

Host	Mouse
Clonality	Monoclonal
Isotype	IgG2b
Applications	WB, ICC/IF, IHC-P, FCM, ELISA, Protein Array
Reactivity	Human

Package
100 µg

Applications

Application Note

*Optimal dilutions/concentrations should be determined by the researcher.

Suggested dilution	Recommended dilution
WB	1-2µg/ml
ICC/IF	1-2µg/ml
IHC-P	1-2µg/ml for 30 minutes at RT
FCM	1-2µg/10 ⁶ cells
ELISA	1-2µg/ml (for coating)
Protein Array	Assay dependent

Note : Staining of formalin-fixed tissues requires heating tissue sections in 10mM Tris with 1mM EDTA, pH 9.0, for 45 min at 95°C followed by cooling at RT for 20 minutes.

For ELISA coating, recommend using BSA-free format (please contact us for PBS only format).

Not tested in other applications.

Calculated MW 54 kDa. ([Note](#))

Properties

Form	Liquid
Buffer	PBS, 0.05% BSA
Preservative	0.05% Sodium azide
Storage	Store as concentrated solution. Centrifuge briefly prior to opening vial. For short-term storage (1-2 weeks), store at 4°C. For long-term storage, aliquot and store at -20°C or below. Avoid multiple freeze-thaw cycles.
Concentration	0.2 mg/ml (Please refer to the vial label for the specific concentration.)
Immunogen	Recombinant fragment of human GLUT1 protein (around aa 203-305) (exact sequence is proprietary)
Purification	Protein A/G purified



For full product information, images and publications, please visit our [website](#).

Date 2026 / 01 / 15 Page 1 of 2

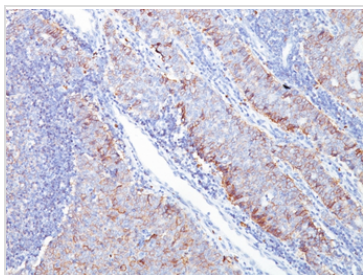
Conjugation

Unconjugated

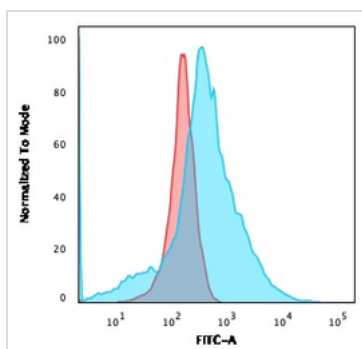
Note

For laboratory research use only. Not for any clinical, therapeutic, or diagnostic use in humans or animals. Not for animal or human consumption.

Purchasers shall not, and agree not to enable third parties to, analyze, copy, reverse engineer or otherwise attempt to determine the structure or sequence of the product.

DATA IMAGES

GTx17991 IHC-P Image

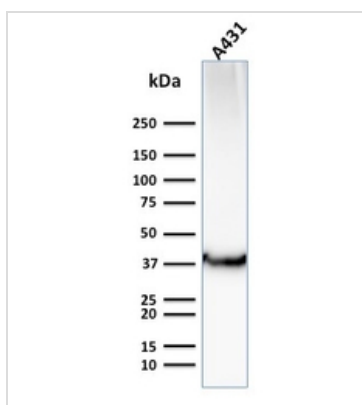
IHC-P analysis of human breast carcinoma tissue using GTx17991 GluT1 antibody [GLUT1/2476].


GTx17991 FCM Image

FACS analysis of K562 cells using GTx17991 GluT1 antibody [GLUT1/2476].

Blue : Primary antibody

Red : Isotype control


GTx17991 WB Image

WB analysis of A431 cell lysate using GTx17991 GluT1 antibody [GLUT1/2476].



For full product information, images and publications, please visit our [website](#).