

Synaptophysin antibody [4E206]

Cat. No. GTX18008

Host	Mouse
Clonality	Monoclonal
Isotype	IgM
Application	WB, IHC
Reactivity	Human, Mouse, Rat, Bovine

Package

50 µl

APPLICATION

Application Note

*Optimal dilutions/concentrations should be determined by the researcher.

Suggested dilution	Recommended dilution
WB	1:2000
IHC	1:50

Not tested in other applications.

Calculated MW 34 kDa. ([Note](#))

PROPERTIES

Form	Liquid
Buffer	PBS pH7.2, 50% Glycerol
Preservative	0.09% Sodium azide
Storage	Store as concentrated solution. Centrifuge briefly prior to opening vial. For short-term storage (1-2 weeks), store at 4°C. For long-term storage, aliquot and store at -20°C or below. Avoid multiple freeze-thaw cycles.
Concentration	Batch dependent (Please refer to the vial label for the specific concentration.)
Immunogen	Synaptic vesicle-containing fractions immunoprecipitated from human brain homogenates.
Purification	Purified by ammonium sulfate precipitation
Conjugation	Unconjugated

Note

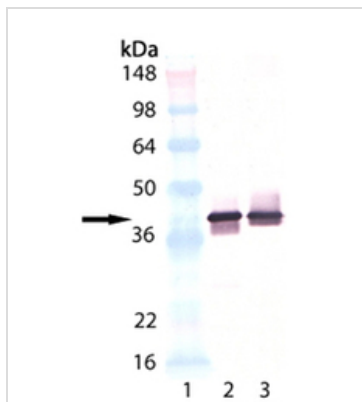
For laboratory research use only. Not for any clinical, therapeutic, or diagnostic use in humans or animals. Not for animal or human consumption.

Purchasers shall not, and agree not to enable third parties to, analyze, copy, reverse engineer or otherwise attempt to determine the structure or sequence of the product.



For full product information, images and publications, please visit our [website](#).

DATA IMAGES



GTX18008 WB Image

WB analysis of various samples using GTX18008 Synaptophysin antibody [4E206].

Lane 1 : MW marker

Lane 2 : Mouse brain extract

Lane 3 : Rat brain extract



For full product information, images and publications, please visit our [website](https://www.genetex.com).