

Syntaxin antibody [4H256]

Cat. No. GTX18010

Host	Mouse
Clonality	Monoclonal
Isotype	IgG1
Applications	WB
Reactivity	Human, Mouse, Rat, Bovine, Cat, Hamster, Pig, Xenopus laevis

References (2)

Package

50 µg

Applications

Application Note

*Optimal dilutions/concentrations should be determined by the researcher.

Suggested dilution	Recommended dilution
WB	Assay dependent

Not tested in other applications.

Calculated MW 33 kDa. ([Note](#))

Properties

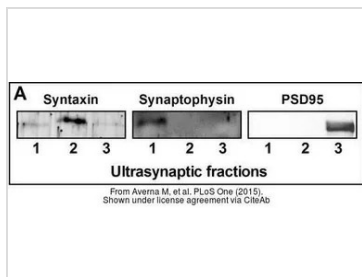
Form	Liquid
Buffer	PBS, 50% Glycerol, 0.1mM PMSF
Preservative	No preservatives
Storage	Store as concentrated solution. Centrifuge briefly prior to opening vial. For short-term storage (1-2 weeks), store at 4°C. For long-term storage, aliquot and store at -20°C or below. Avoid multiple freeze-thaw cycles.
Concentration	Batch dependent (Please refer to the vial label for the specific concentration.)
Immunogen	Synaptic vesicle-containing fractions that were immunoprecipitated from human brain homogenates using anti-human Synaptophysin monoclonal antibodies.
Purification	Protein G purified
Conjugation	Unconjugated

Note

For laboratory research use only. Not for any clinical, therapeutic, or diagnostic use in humans or animals. Not for animal or human consumption.

Purchasers shall not, and agree not to enable third parties to, analyze, copy, reverse engineer or otherwise attempt to determine the structure or sequence of the product.

For full product information, images and publications, please visit our [website](#).

DATA IMAGES

GTX18010 WB Image

The data was published in the journal PLoS One in 2015. [PMID: 26431040](https://pubmed.ncbi.nlm.nih.gov/26431040/)



For full product information, images and publications, please visit our [website](https://www.genetex.com).