

STX12 antibody [4E212]

Cat. No. GTX18011

Host	Mouse
Clonality	Monoclonal
Isotype	IgG
Applications	WB, IHC-P
Reactivity	Human, Mouse, Rat

Package
50 µg

Applications

Application Note

*Optimal dilutions/concentrations should be determined by the researcher.

Suggested dilution	Recommended dilution
WB	1:1000
IHC-P	Assay dependent

Not tested in other applications.

Calculated MW 31 kDa. ([Note](#))

Properties

Form	Liquid
Buffer	PBS, 50% Glycerol
Preservative	0.09% Sodium azide
Storage	Store as concentrated solution. Centrifuge briefly prior to opening vial. For short-term storage (1-2 weeks), store at 4°C. For long-term storage, aliquot and store at -20°C or below. Avoid multiple freeze-thaw cycles.
Concentration	Batch dependent (Please refer to the vial label for the specific concentration.)
Immunogen	Recombinant cytoplasmic domain of rat syntaxin 13.
Purification	Protein G purified
Conjugation	Unconjugated

Note

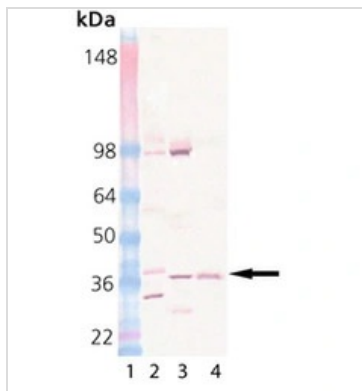
For laboratory research use only. Not for any clinical, therapeutic, or diagnostic use in humans or animals. Not for animal or human consumption.

Purchasers shall not, and agree not to enable third parties to, analyze, copy, reverse engineer or otherwise attempt to determine the structure or sequence of the product.



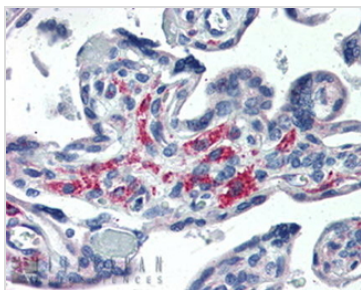
For full product information, images and publications, please visit our [website](#).

DATA IMAGES



GTX18011 WB Image

WB analysis of various sample lysates using GTX18011 STX12 antibody [4E212]. Lane 1 : MW Marker Lane 2 : Rat Brain Lysate Lane 3 : Mouse Brain Lysate Lane 4 : CHO-K1 Cell Lysate (Heat Shocked)



GTX18011 WB Image

WB analysis of PC-12 cell lysate using GTX18011 STX12 antibody [4E212].



For full product information, images and publications, please visit our [website](https://www.genetex.com).