

CD5 antibody [CD5/2416]

Cat. No. GTX18024

Host	Mouse
Clonality	Monoclonal
Isotype	IgG2b
Applications	WB, ICC/IF, IHC-P, FCM, Protein Array
Reactivity	Human

Package
100 µg

Applications

Application Note

*Optimal dilutions/concentrations should be determined by the researcher.

Suggested dilution	Recommended dilution
WB	1-2µg/ml
ICC/IF	1-2µg/10 ⁶ cells
IHC-P	1-2µg/ml for 30 minutes at RT
FCM	1-2µg/10 ⁶ cells
Protein Array	Assay dependent

Note : Staining of formalin-fixed tissues requires heating tissue sections in 10mM Tris with 1mM EDTA, pH 9.0, for 45 min at 95°C followed by cooling at RT for 20 minutes.

Not tested in other applications.

Calculated MW 55 kDa. ([Note](#))

Properties

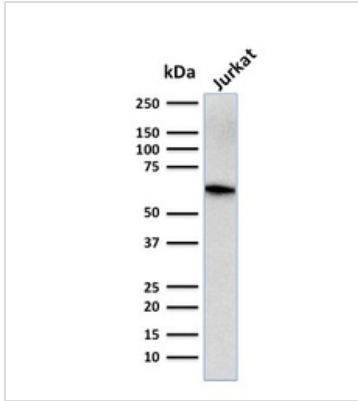
Form	Liquid
Buffer	PBS, 0.05% BSA
Preservative	0.05% Sodium azide
Storage	Store as concentrated solution. Centrifuge briefly prior to opening vial. For short-term storage (1-2 weeks), store at 4°C. For long-term storage, aliquot and store at -20°C or below. Avoid multiple freeze-thaw cycles.
Concentration	0.2 mg/ml (Please refer to the vial label for the specific concentration.)
Immunogen	Recombinant fragment of human CD5 protein (around aa 269-366) (exact sequence is proprietary)
Purification	Protein A/G purified
Conjugation	Unconjugated

For full product information, images and publications, please visit our [website](#).

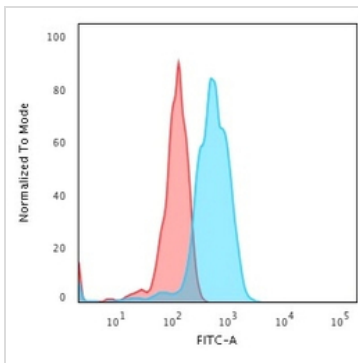
For laboratory research use only. Not for any clinical, therapeutic, or diagnostic use in humans or animals. Not for animal or human consumption.

Note

Purchasers shall not, and agree not to enable third parties to, analyze, copy, reverse engineer or otherwise attempt to determine the structure or sequence of the product.

DATA IMAGES

GTX18024 WB Image

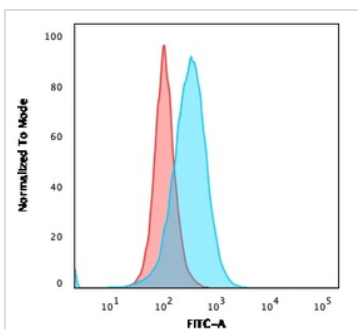
WB analysis of Jurkat cell lysate using GTX18024 CD5 antibody [CD5/2416].


GTX18024 FCM Image

FACS analysis of Jurkat cells using GTX18024 CD5 antibody [CD5/2416].

Blue : Primary antibody

Red : Isotype control


GTX18024 FCM Image

FACS analysis of Ramos cells using GTX18024 CD5 antibody [CD5/2416].

Blue : Primary antibody

Red : Isotype control



For full product information, images and publications, please visit our [website](https://www.genetex.com).