

Caspase 2 antibody [4i13(C2)]

Cat. No. GTX18029

Host	Mouse
Clonality	Monoclonal
Isotype	IgG1
Applications	WB, ELISA
Reactivity	Human

Package

50 µl

Applications

Application Note

*Optimal dilutions/concentrations should be determined by the researcher.

Suggested dilution	Recommended dilution
WB	1:1000
ELISA	Assay dependent

Not tested in other applications.

Calculated MW 51 kDa. ([Note](#))

Product Note Recognizes endogenous levels of human procaspase-2 at ~48kD as well as its 14 and 12kD cleaved fragments.

Properties

Form	Liquid
Buffer	10mM Sodium HEPES, 150mM NaCl, 0.01% BSA, 50% Glycerol
Preservative	0.02% Sodium azide
Storage	Store as concentrated solution. Centrifuge briefly prior to opening vial. For short-term storage (1-2 weeks), store at 4°C. For long-term storage, aliquot and store at -20°C or below. Avoid multiple freeze-thaw cycles.
Immunogen	Synthetic peptide corresponding to the C-terminal portion of human caspase-2.
Purification	Unpurified
Conjugation	Unconjugated

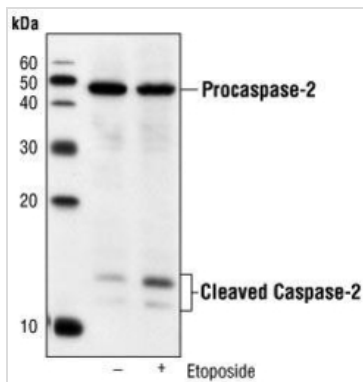
Note

For laboratory research use only. Not for any clinical, therapeutic, or diagnostic use in humans or animals. Not for animal or human consumption.

Purchasers shall not, and agree not to enable third parties to, analyze, copy, reverse engineer or otherwise attempt to determine the structure or sequence of the product.



For full product information, images and publications, please visit our [website](#).

DATA IMAGES

GTX18029 WB Image

WB analysis of untreated or etoposide-treated Jurkat cell lysate using GTX18029 Caspase 2 antibody [4i13(C2)].



For full product information, images and publications, please visit our [website](#).