

# Presenilin 2 antibody

**Cat. No. GTX18041**

<b>Host</b>	Chicken
<b>Clonality</b>	Polyclonal
<b>Isotype</b>	IgY
<b>Applications</b>	WB, ELISA, IHC
<b>Reactivity</b>	Human, Mouse, Rat

**Package**  
250 µg

## Applications

### Application Note

ELISA: 1/1000 - 1/4000. IHC: Use at an assay dependent dilution. WB: 1/1000 - 1/4000. Predicted molecular weight: 54 kDa. To minimize background staining, we suggest using higher content of detergent (Tween-20) in dilutions of the antibody and washing. Optimal dilutions/concentrations should be determined by the end user.

**Calculated MW** 50 kDa. ( [Note](#) )

## Properties

<b>Form</b>	Liquid
<b>Storage</b>	Store as concentrated solution. Centrifuge briefly prior to opening vial. For short-term storage (1-2 weeks), store at 4°C. For long-term storage, aliquot and store at -20°C or below. Avoid multiple freeze-thaw cycles.
<b>Concentration</b>	1 mg/ml (Please refer to the vial label for the specific concentration.)
<b>Immunogen</b>	Two synthetic peptides (Human).
<b>Purification</b>	IgY fraction
<b>Conjugation</b>	Unconjugated

### Note

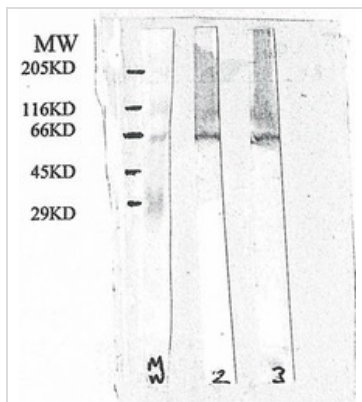
For laboratory research use only. Not for any clinical, therapeutic, or diagnostic use in humans or animals. Not for animal or human consumption.

Purchasers shall not, and agree not to enable third parties to, analyze, copy, reverse engineer or otherwise attempt to determine the structure or sequence of the product.



For full product information, images and publications, please visit our [website](#).

## DATA IMAGES



### GTX18041 WB Image

Western blot analysis of mouse brain extract (20ug/lane total protein) with chicken anti presenilin 1 (Lane 2) and chicken anti presenilin 2 (GTX18041) (Lane 3)



For full product information, images and publications, please visit our [website](https://www.genetex.com).