

alpha Actinin 1 antibody [0.T.02]

Cat. No. GTX18061

Host	Mouse
Clonality	Monoclonal
Isotype	IgG1
Applications	WB, ICC/IF, IHC-Fr
Reactivity	Human, Mouse, Rat, Xenopus

References (1)

Package

100 µg

Applications

Application Note

*Optimal dilutions/concentrations should be determined by the researcher.

Suggested dilution	Recommended dilution
WB	0.5-2µg/ml
ICC/IF	15µg/ml (fixed with methanol)
IHC-Fr	15µg/ml

Not tested in other applications.

Calculated MW 103 kDa. ([Note](#))**Product Note** Recognizes human alpha-Actinin 1 isoform (non-muscle) at 100kD.

Properties

Form	Liquid
Buffer	PBS, 250mM NaCl
Preservative	0.1% Sodium azide
Storage	Store as concentrated solution. Centrifuge briefly prior to opening vial. For short-term storage (1-2 weeks), store at 4°C. For long-term storage, aliquot and store at -20°C or below. Avoid multiple freeze-thaw cycles.
Concentration	Batch dependent (Please refer to the vial label for the specific concentration.)
Immunogen	Human alpha-Actinin
Purification	Protein A purified
Conjugation	Unconjugated

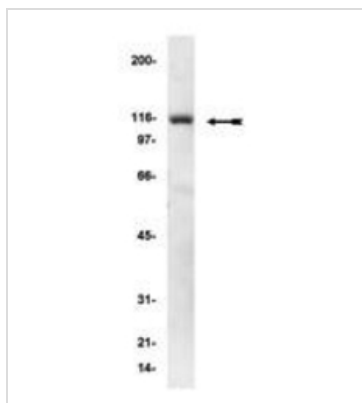
For full product information, images and publications, please visit our [website](#).

For laboratory research use only. Not for any clinical, therapeutic, or diagnostic use in humans or animals. Not for animal or human consumption.

Note

Purchasers shall not, and agree not to enable third parties to, analyze, copy, reverse engineer or otherwise attempt to determine the structure or sequence of the product.

DATA IMAGES



GTX18061 WB Image

WB analysis of A431 cell lysate using GTX18061 alpha Actinin 1 antibody [0.T.02].



For full product information, images and publications, please visit our [website](#).