

OPG antibody (Biotin)

Cat. No. GTX18068

Host	Rabbit
Clonality	Polyclonal
Isotype	IgG
Applications	WB, ELISA, Sandwich ELISA
Reactivity	Human

Package

25 µg

Applications

Application Note

*Optimal dilutions/concentrations should be determined by the researcher.

Suggested dilution	Recommended dilution
WB	0.1 - 0.2 µg/mL
ELISA	0.15 - 0.30 µg/mL
Sandwich ELISA	0.25 - 1.0 ug/ml

Note : Capture : Anti-Human OPG antibody, Detection : GTX18068

Not tested in other applications.

Calculated MW 46 kDa. ([Note](#))

Properties

Form	Liquid
Buffer	PBS
Preservative	No preservatives
Storage	Store as concentrated solution. Centrifuge briefly prior to opening vial. For short-term storage (1-2 weeks), store at 4°C. For long-term storage, aliquot and store at -20°C or below. Avoid multiple freeze-thaw cycles.
Concentration	Batch dependent (Please refer to the vial label for the specific concentration.)
Immunogen	Produced from sera of rabbits pre-immunized with highly pure (>98%) recombinant hOPG (human OPG).
Purification	Purified by affinity chromatography
Conjugation	Biotin

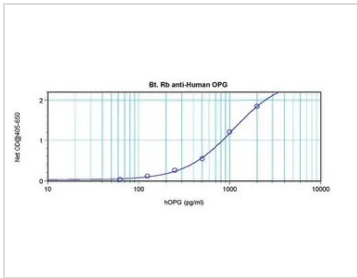
Note

For laboratory research use only. Not for any clinical, therapeutic, or diagnostic use in humans or animals. Not for animal or human consumption.

Purchasers shall not, and agree not to enable third parties to, analyze, copy, reverse engineer or otherwise attempt to determine the structure or sequence of the product.

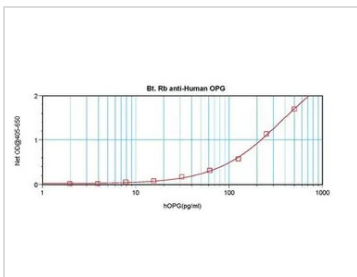


For full product information, images and publications, please visit our [website](#).

DATA IMAGES

GTX18068 ELISA Image

ELISA analysis of human OPG recombinant protein (0.2 – 0.4 ng/well) using GTX18068 OPG antibody (Biotin).

Working concentration : 0.25- 1.0 ug/ml


GTX18068 ELISA Image

ELISA analysis of human OPG recombinant protein(0.2 - 0.4 ng/well) using GTX18068 OPG antibody (Biotin) (detection antibody) at 0.25- 1.0 ug/ml and Anti-Human OPG as a capture antibody.



For full product information, images and publications, please visit our [website](https://www.genetex.com).