

Rhodopsin antibody [1D4] (Biotin)

Cat. No. GTX18143

Host	Mouse
Clonality	Monoclonal
Isotype	IgG1
Application	WB, ICC/IF, IHC-P, IP, ELISA
Reactivity	Human, Mouse, Rat, Bovine

Reference (1)

Package

100 µg

APPLICATION

Application Note

*Optimal dilutions/concentrations should be determined by the researcher.

Suggested dilution	Recommended dilution
WB	1:1000
ICC/IF	Assay dependent
IHC-P	1:100
IP	Assay dependent
ELISA	Assay dependent

Not tested in other applications.

Calculated MW 39 kDa. ([Note](#))

Product Note Detects ~40kDa. Binds specifically to the N-terminus of Rhodopsin. Does not detect Rhodopsin in invertebrates.

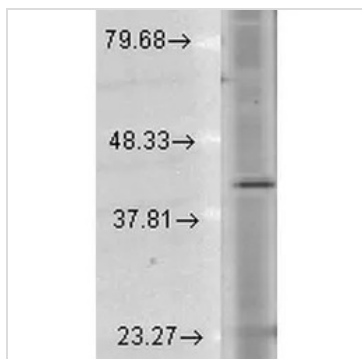
PROPERTIES

Form	Liquid
Buffer	PBS, 50% Glycerol
Preservative	0.09% Sodium azide
Storage	Store as concentrated solution. Centrifuge briefly prior to opening vial. For short-term storage (1-2 weeks), store at 4°C. For long-term storage, aliquot and store at -20°C or below. Avoid multiple freeze-thaw cycles.
Concentration	1 mg/ml (Please refer to the vial label for the specific concentration.)
Immunogen	Bovine Rhodopsin
Purification	Protein G Purified
Conjugation	Biotin



For full product information, images and publications, please visit our [website](#).

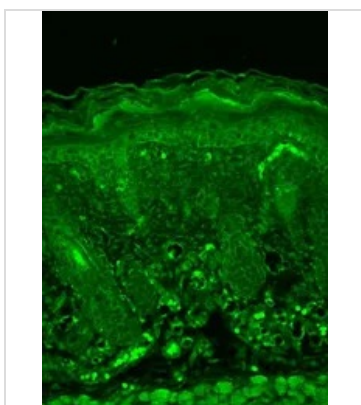
Note For In vitro laboratory use only. Not for any clinical, therapeutic, or diagnostic use in humans or animals. Not for animal or human consumption.

DATA IMAGES

GTX18143 WB Image

WB analysis of human cell lysates using GTX18143 Rhodopsin antibody [1D4] (Biotin).

Loading : 15 µg

Dilution : 1:1000


GTX18143 IHC-P Image

IHC-P analysis mouse backskin tissue using GTX18143 Rhodopsin antibody [1D4] (Biotin).

Fixation : Bouin's Fixative

Dilution : 1:100



For full product information, images and publications, please visit our [website](https://www.genetex.com).