

Muscle Actin antibody [3F10]

Cat. No. GTX18146

Host	Mouse
Clonality	Monoclonal
Isotype	IgG1
Applications	ICC/IF, IHC-P
Reactivity	Human, Mouse, Rat, Bovine, Dog, Pig, Horse

Package
500 µl

Applications

Application Note

*Optimal dilutions/concentrations should be determined by the researcher.

Suggested dilution	Recommended dilution
ICC/IF	Assay dependent
IHC-P	1-2µg/ml for 30 minutes at RT

Not tested in other applications.

Product Note

Reacts with alpha- smooth muscle as well as alpha-skeletal and alpha-cardiac (sarcomeric) isoform of actin. Reacts with tumors arising from smooth muscle (leiomyosarcomas) as well as skeletal muscle (rhabdomyosarcomas).

Properties

Form	Liquid
Buffer	PBS, 0.2% BSA
Preservative	0.09% Sodium azide
Storage	Store as concentrated solution. Centrifuge briefly prior to opening vial. For short-term storage (1-2 weeks), store at 4°C. For long-term storage, aliquot and store at -20°C or below. Avoid multiple freeze-thaw cycles.
Concentration	Batch dependent (Please refer to the vial label for the specific concentration.)
Immunogen	Purified actin.
Purification	Protein G purified
Conjugation	Unconjugated

Note

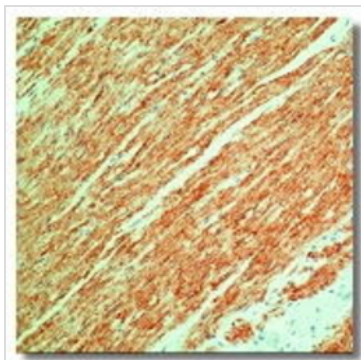
For laboratory research use only. Not for any clinical, therapeutic, or diagnostic use in humans or animals. Not for animal or human consumption.

Purchasers shall not, and agree not to enable third parties to, analyze, copy, reverse engineer or otherwise attempt to determine the structure or sequence of the product.



For full product information, images and publications, please visit our [website](#).

DATA IMAGES



GTx18146 IHC-P Image

IHC-P analysis of human rectum tissue using GTx18146 Muscle Actin antibody [3F10].



For full product information, images and publications, please visit our [website](#).