

PLK1 (phospho Tyr217) antibody

Cat. No. GTX18156

Host	Rabbit
Clonality	Polyclonal
Isotype	IgG
Applications	WB
Reactivity	Human

Package
100 µl

Applications

Application Note

*Optimal dilutions/concentrations should be determined by the researcher.

Suggested dilution	Recommended dilution
WB	1:500-1:2000

Not tested in other applications.

Calculated MW 68 kDa. ([Note](#))

Properties

Form	Liquid
Buffer	PBS, 150mM NaCl, 50% Glycerol
Preservative	0.02% Sodium azide
Storage	Store as concentrated solution. Centrifuge briefly prior to opening vial. For short-term storage (1-2 weeks), store at 4°C. For long-term storage, aliquot and store at -20°C or below. Avoid multiple freeze-thaw cycles.
Concentration	1 mg/ml (Please refer to the vial label for the specific concentration.)
Immunogen	A synthesized peptide derived from human PLK1 around the phosphorylation site of Tyr217
Purification	Purified by affinity purification via sequential chromatography on phospho- and non-phospho-peptide affinity columns From serum
Conjugation	Unconjugated

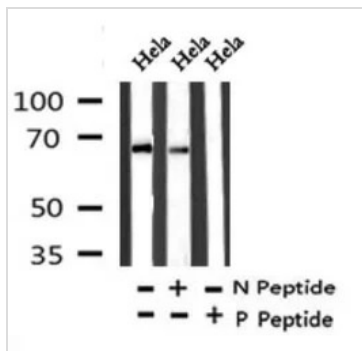
Note

For laboratory research use only. Not for any clinical, therapeutic, or diagnostic use in humans or animals. Not for animal or human consumption.

Purchasers shall not, and agree not to enable third parties to, analyze, copy, reverse engineer or otherwise attempt to determine the structure or sequence of the product.



For full product information, images and publications, please visit our [website](#).

DATA IMAGES

GTX18156 WB Image

WB analysis of HeLa cell lysate preincubated with the phospho and nonphospho antigen peptide using GTX18156 PLK1 (phospho Tyr217) antibody.



For full product information, images and publications, please visit our [website](https://www.genetex.com).