

CD146 antibody [2Q401] (FITC)

Cat. No. GTX18166

Host	Mouse
Clonality	Monoclonal
Isotype	IgG1
Application	FACS
Reactivity	Human, Mouse, Rabbit, Dog, Pig

Reference (1)
Package
25 µg

APPLICATION

Application Note

*Optimal dilutions/concentrations should be determined by the researcher.

Suggested dilution	Recommended dilution
FACS	1-10µg/ml
Not tested in other applications.	

Calculated MW 72 kDa. ([Note](#))

Product Note In blood and marrow, reacts only with endothelial cells. Detects circulating endothelial cells.

PROPERTIES

Form	Liquid
Buffer	PBS, 1.5% BSA
Preservative	0.09% Sodium azide
Storage	Store as concentrated solution. Centrifuge briefly prior to opening vial. For short-term storage (1-2 weeks), store at 4°C. For long-term storage, aliquot and store at -20°C or below. Avoid multiple freeze-thaw cycles. Protect from light.
Concentration	Batch dependent (Please refer to the vial label for the specific concentration.)
Immunogen	HUVEC
Purification	Purified IgG
Conjugation	Fluorescein isothiocyanate (FITC)

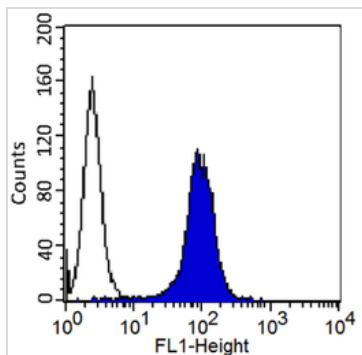
Note

For laboratory research use only. Not for any clinical, therapeutic, or diagnostic use in humans or animals. Not for animal or human consumption.

Purchasers shall not, and agree not to enable third parties to, analyze, copy, reverse engineer or otherwise attempt to determine the structure or sequence of the product.



For full product information, images and publications, please visit our [website](#).

DATA IMAGES

GTX18166 FACS Image

FACS analysis of HeLa cells using GTX18166 CD146 antibody [2Q401] (FITC).

Blue histogram : Primary antibody

Unshaded histogram : Isotype control



For full product information, images and publications, please visit our [website](#).