

## EAAT1 antibody

Cat. No. GTX18175

<b>Host</b>	Rabbit
<b>Clonality</b>	Polyclonal
<b>Isotype</b>	IgG
<b>Applications</b>	WB, ICC/IF, FCM, IHC (Free Floating), LCI
<b>Reactivity</b>	Human, Mouse, Rat

Package  
50 µl

## Applications

## Application Note

\*Optimal dilutions/concentrations should be determined by the researcher.

Suggested dilution	Recommended dilution
WB	Assay dependent
ICC/IF	Assay dependent
FCM	Assay dependent
IHC (Free Floating)	Assay dependent
LCI	Assay dependent

Not tested in other applications.

**Calculated MW** 60 kDa. ([Note](#))

## Properties

<b>Form</b>	Liquid
<b>Buffer</b>	PBS, 1% BSA
<b>Preservative</b>	0.05% Sodium azide
<b>Storage</b>	Store as concentrated solution. Centrifuge briefly prior to opening vial. For short-term storage (1-2 weeks), store at 4°C. For long-term storage, aliquot and store at -20°C or below. Avoid multiple freeze-thaw cycles.
<b>Concentration</b>	0.4 mg/ml (Please refer to the vial label for the specific concentration.)
<b>Immunogen</b>	Peptide (C)KQFKTSYEKRSFK, corresponding to amino acids 188-200 of rat EAAT1 (Accession P24942). 2nd extracellular loop.
<b>Purification</b>	Purified by antigen-affinity chromatography
<b>Conjugation</b>	Unconjugated



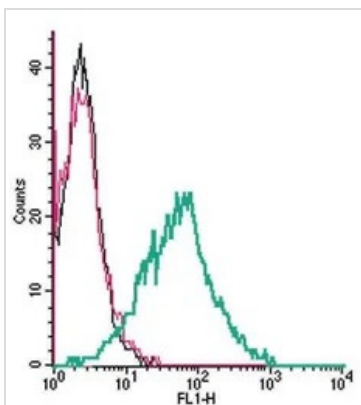
For full product information, images and publications, please visit our [website](#).

For laboratory research use only. Not for any clinical, therapeutic, or diagnostic use in humans or animals. Not for animal or human consumption.

**Note**

Purchasers shall not, and agree not to enable third parties to, analyze, copy, reverse engineer or otherwise attempt to determine the structure or sequence of the product.

DATA IMAGES



**GTX18175 FCM Image**

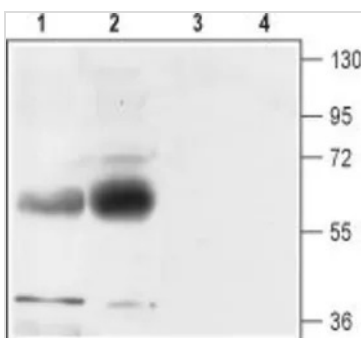
FACS analysis of live intact MEG-01 cells using GTX18175 EAAT1 antibody.

Black : Unstained cell

Red : Cell staining with isotype control antibody

Green : Cell staining with primary antibody

Antibody amount : 2.5 µg



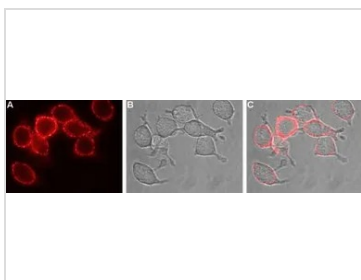
**GTX18175 WB Image**

WB analysis of rat (lanes 1 and 3) and mouse (lanes 2 and 4) brain membrane lysates using GTX18175 EAAT1 antibody.

Lane 1, 2 : Primary antibody

Lane 3, 4 : Primary antibody preincubated with immunogen peptide

Dilution : 1:500



**GTX18175 LCI Image**

Live cell imaging analysis of live intact U-87 MG cells using GTX18175 EAAT1 antibody.

Panel A : Primary antibody (Red)

Panel B : Live view of the cell

Panel C : Merged images of Panel A and B

Dilution : 1:100



For full product information, images and publications, please visit our [website](#).