

# HA tag antibody [HA.C5]

**Cat. No. GTX18181**

<b>Host</b>	Mouse
<b>Clonality</b>	Monoclonal
<b>Isotype</b>	IgG3
<b>Applications</b>	WB, ICC/IF, IP, ELISA, IHC
<b>Reactivity</b>	Species independent

References ( 4 )

Package

100 µg

## Applications

### Application Note

#### Recommended Starting Dilutions:

WB (with ECL): Use at a dilution of 1:1000-3000

Immunostaining: Use at a dilution of 1:500 - 1:2000

For best results with other assays (e.g.: Dot, ELISA, IP, etc), please determine optimal working dilution by titration test

**Product Note** Recognizes the N-terminal, C-terminal or internal HA-tagged fusion proteins

## Properties

<b>Form</b>	Liquid
<b>Buffer</b>	PBS
<b>Preservative</b>	0.05% Sodium azide
<b>Storage</b>	Store as concentrated solution. Centrifuge briefly prior to opening vial. For short-term storage (1-2 weeks), store at 4°C. For long-term storage, aliquot and store at -20°C or below. Avoid multiple freeze-thaw cycles.
<b>Concentration</b>	1 mg/ml (Please refer to the vial label for the specific concentration.)
<b>Immunogen</b>	YPYDVDPYA (HA) synthetic peptide conjugated to KLH
<b>Purification</b>	Protein A purified
<b>Conjugation</b>	Unconjugated

### Note

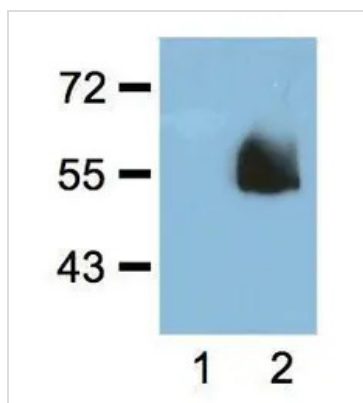
For laboratory research use only. Not for any clinical, therapeutic, or diagnostic use in humans or animals. Not for animal or human consumption.

Purchasers shall not, and agree not to enable third parties to, analyze, copy, reverse engineer or otherwise attempt to determine the structure or sequence of the product.



For full product information, images and publications, please visit our [website](#).

## DATA IMAGES



### GTX18181 WB Image

1:1000 (1µg/mL) Ab dilution probed against HEK293 cells transfected with HA-tagged protein vector; untransfected (1) and transfected (2)



For full product information, images and publications, please visit our [website](https://www.genetex.com).