

6X His tag antibody [HIS.H8]

Cat. No. GTX18184

Host	Mouse
Clonality	Monoclonal
Isotype	IgG2b
Applications	WB, ICC/IF, IP, ELISA
Reactivity	Species independent

References (4)

Package

100 µg

Applications

Application Note

Recommended Starting Dilutions: For WB: Use at a dilution of 1:1000-1:3000. For ICC/IF: Use at a dilution of 1:500-1:2000. For IP: Use at a dilution of 1:50-1:200. Optimal dilutions should be determined experimentally by the end user.

Product Note

Recognizes the epitope of 6x His-tags encoded by many commercially available vectors, regardless of the tag's location in the fusion protein sequences (i.e.: reacts with N-terminal, C-terminal or internal 6x His-tags)

Properties

Form	Liquid
Buffer	PBS
Preservative	0.05% Sodium azide
Storage	Store as concentrated solution. Centrifuge briefly prior to opening vial. For short-term storage (1-2 weeks), store at 4°C. For long-term storage, aliquot and store at -20°C or below. Avoid multiple freeze-thaw cycles.
Concentration	Batch dependent (Please refer to the vial label for the specific concentration.)
Immunogen	HHHHHH (6x His) synthetic peptide conjugated to KLH
Purification	Protein A purified
Conjugation	Unconjugated

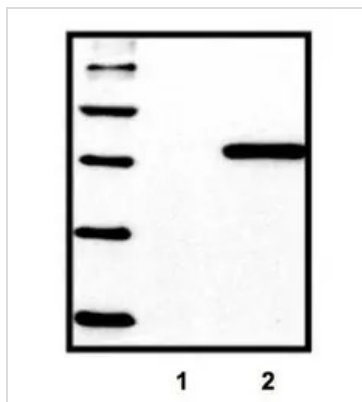
Note

For laboratory research use only. Not for any clinical, therapeutic, or diagnostic use in humans or animals. Not for animal or human consumption.

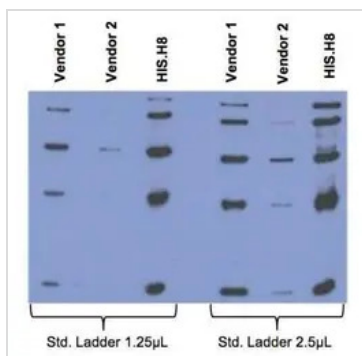
Purchasers shall not, and agree not to enable third parties to, analyze, copy, reverse engineer or otherwise attempt to determine the structure or sequence of the product.



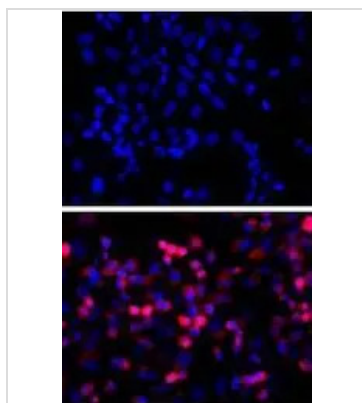
For full product information, images and publications, please visit our [website](#).

DATA IMAGES

GTX18184 WB Image

Standard ladder containing five different His-tagged proteins; untransfected control (1), HEK293 cells transfected with His-tagged protein vector (2)


GTX18184 WB Image

Comparison between anti-His tag (HIS.H8 / EH158) mAb with 2 different vendor Abs, probed against a standard ladder containing five different His-tagged proteins. All Ab dilutions are 1:2000 (0.5µg/mL)


GTX18184 ICC/IF Image

TOP: untransfected control; BOTTOM: anti-His (in red) on His-tagged fusion proteins in HEK293 cells. Both counterstained with DAPI (in blue)



For full product information, images and publications, please visit our [website](#).