

# Myc tag antibody [Myc.A7]

**Cat. No. GTX18185**

<b>Host</b>	Mouse
<b>Clonality</b>	Monoclonal
<b>Isotype</b>	IgG1
<b>Applications</b>	WB, ICC/IF, IP, ELISA, IHC
<b>Reactivity</b>	Species independent

**Package**  
100 µg

## Applications

### Application Note

#### Recommended Starting Dilutions:

WB (with ECL): Use at a dilution of 1:1000-3000

Immunostaining: Use at a dilution of 1:500 - 1:2000

For best results with other assays (e.g.: Dot, ELISA, IP, etc), please determine optimal working dilution by titration test

**Product Note** Recognizes the N-terminal or C-terminal Myc-tagged fusion proteins

## Properties

<b>Form</b>	Liquid
<b>Buffer</b>	PBS
<b>Preservative</b>	No preservative
<b>Storage</b>	Store as concentrated solution. Centrifuge briefly prior to opening vial. For short-term storage (1-2 weeks), store at 4°C. For long-term storage, aliquot and store at -20°C or below. Avoid multiple freeze-thaw cycles.
<b>Concentration</b>	1 mg/ml (Please refer to the vial label for the specific concentration.)
<b>Immunogen</b>	EQKLISEEDL (Myc) synthetic peptide conjugated to KLH
<b>Purification</b>	Protein A purified
<b>Conjugation</b>	Unconjugated

### Note

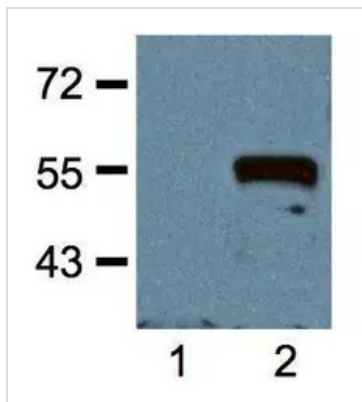
For laboratory research use only. Not for any clinical, therapeutic, or diagnostic use in humans or animals. Not for animal or human consumption.

Purchasers shall not, and agree not to enable third parties to, analyze, copy, reverse engineer or otherwise attempt to determine the structure or sequence of the product.



For full product information, images and publications, please visit our [website](#).

## DATA IMAGES



### GTX18185 WB Image

1:1000 (1µg/mL) Ab dilution probed against HEK293 cells transfected with Myc-tagged protein vector; untransfected (1) and transfected (2)



For full product information, images and publications, please visit our [website](https://www.genetex.com).