

## CD34 antibody [4H11(APG)] (PE)

**Cat. No. GTX18228**

|                     |             |
|---------------------|-------------|
| <b>Host</b>         | Mouse       |
| <b>Clonality</b>    | Monoclonal  |
| <b>Isotype</b>      | IgG1        |
| <b>Applications</b> | ICC/IF, FCM |
| <b>Reactivity</b>   | Human       |

References ( 2 )  
 Package  
 100 test

## Applications

**Application Note**

\*Optimal dilutions/concentrations should be determined by the researcher.

| Suggested dilution | Recommended dilution   |
|--------------------|--|
| ICC/IF             | Assay dependent  |
| FCM                | 20 µl reagent / 100 µl of whole blood or 10 <sup>6</sup> cells in a suspension |

Not tested in other applications.

**Product Note**

This antibody reacts with Class III epitope on CD34 (Mucosialin). The antibody 4H11[APG] completely blocks binding of Class II antibody QBEnd10 and Class III antibodies BIRMA K3 and 8G12 on KG1a cell line.

## Properties

|                      |  |
|----------------------|--|
| <b>Form</b>          | Liquid   |
| <b>Buffer</b>        | PBS  |
| <b>Preservative</b>  | 15mM Sodium azide  |
| <b>Storage</b>       | Store as concentrated solution. Centrifuge briefly prior to opening vial. Store at 4°C. DO NOT FREEZE. Protect from light. |
| <b>Concentration</b> | Batch dependent (Please refer to the vial label for the specific concentration.)   |
| <b>Immunogen</b>     | Permanent human cell line derived from peripheral leucocytes of a patient suffering from chronic myeloid leukaemia.        |
| <b>Purification</b>  | Purified by size-exclusion chromatography  |
| <b>Conjugation</b>   | Phycoerythrin (PE) <a href="#">Wavelength</a>  |

**Note**

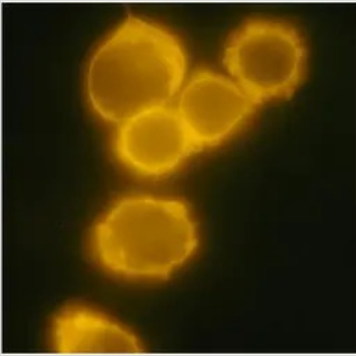
For laboratory research use only. Not for any clinical, therapeutic, or diagnostic use in humans or animals. Not for animal or human consumption.

Purchasers shall not, and agree not to enable third parties to, analyze, copy, reverse engineer or otherwise attempt to determine the structure or sequence of the product.



For full product information, images and publications, please visit our [website](#).

## DATA IMAGES

**GTX18228 ICC/IF Image**

ICC/IF analysis of MOLM-7 cells using GTX18228 CD34 antibody [4H11(APG)] (PE).



For full product information, images and publications, please visit our [website](#).