

## DDDDK tag antibody [F-tag-01]

Cat. No. GTX18230

Host	Mouse
Clonality	Monoclonal
Isotype	IgG1
Applications	WB, ICC/IF
Reactivity	Species independent

References ( 1 )

Package

100 µg

## Applications

## Application Note

\*Optimal dilutions/concentrations should be determined by the researcher.

Suggested dilution	Recommended dilution
WB	Assay dependent
ICC/IF	Assay dependent

Not tested in other applications.

## Properties

Form	Liquid
Buffer	PBS
Preservative	15mM Sodium azide
Storage	Store as concentrated solution. Centrifuge briefly prior to opening vial. Store at 4°C. DO NOT FREEZE.
Concentration	1 mg/ml (Please refer to the vial label for the specific concentration.)
Immunogen	Synthetic peptide: DYKDDDDK conjugated to KLH
Purification	Protein A purified
Conjugation	Unconjugated

## Note

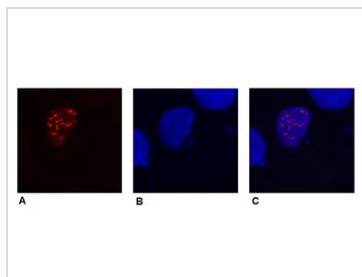
For laboratory research use only. Not for any clinical, therapeutic, or diagnostic use in humans or animals. Not for animal or human consumption.

Purchasers shall not, and agree not to enable third parties to, analyze, copy, reverse engineer or otherwise attempt to determine the structure or sequence of the product.



For full product information, images and publications, please visit our [website](#).

## DATA IMAGES



### GTX18230 ICC/IF Image

ICC/IF analysis of COS-7 cells transfected with expression constructs encoding fusion nuclear protein with DDDDK epitope using GTX18230 DDDDK tag antibody [F-tag-01].

Panel A : anti-DDDDK antibody (Red)

Panel B : DAPI (blue)

Panel C : Merged



For full product information, images and publications, please visit our [website](#).