

CD18 antibody [MEM-48] (FITC)

Cat. No. GTX18238

Host	Mouse
Clonality	Monoclonal
Isotype	IgG1
Applications	FCM, Blocking
Reactivity	Human

References (1)
Package
100 test

Applications

Application Note

*Optimal dilutions/concentrations should be determined by the researcher.

Suggested dilution	Recommended dilution
FCM	20 µl reagent / 100 µl of whole blood or 10 ⁶ cells in a suspension
Blocking	Assay dependent

Not tested in other applications.

Product Note

This antibody recognizes an epitope involving residues 534-546 in cysteine-rich repeat 3 of the CD18 antigen (integrin beta2 subunit; beta2 integrin).
We do not recommend use of this product for Dog samples.

Properties

Form	Liquid
Buffer	PBS
Preservative	15mM Sodium azide
Storage	Store as concentrated solution. Centrifuge briefly prior to opening vial. Store at 4°C. DO NOT FREEZE. Protect from light.
Concentration	Batch dependent (Please refer to the vial label for the specific concentration.)
Immunogen	Leukocytes of a patient suffering from a LGL-type leukemia.
Purification	Purified by size-exclusion chromatography
Conjugation	Fluorescein isothiocyanate (FITC) Wavelength

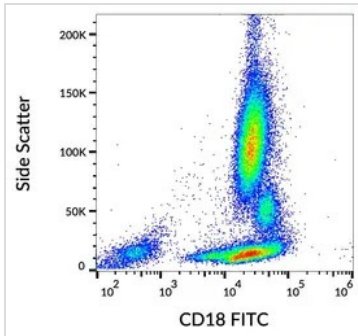
Note

For laboratory research use only. Not for any clinical, therapeutic, or diagnostic use in humans or animals. Not for animal or human consumption.

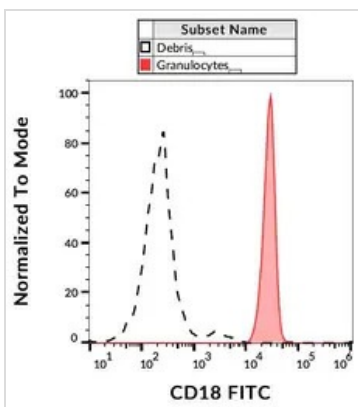
Purchasers shall not, and agree not to enable third parties to, analyze, copy, reverse engineer or otherwise attempt to determine the structure or sequence of the product.



For full product information, images and publications, please visit our [website](#).

DATA IMAGES

GTX18238 FCM Image

FACS analysis of human peripheral blood using GTX18238 CD18 antibody [MEM-48] (FITC).


GTX18238 FCM Image

FACS analysis of human peripheral blood using GTX18238 CD18 antibody [MEM-48] (FITC).



For full product information, images and publications, please visit our [website](https://www.genetex.com).