

alpha Tubulin antibody [TU-01] (FITC)

Cat. No. GTX18247

Host	Mouse
Clonality	Monoclonal
Isotype	IgG1
Applications	ICC/IF, FCM
Reactivity	Human, Mouse, Rat, Pig

References (1)

Package

100 µg

Applications

Application Note

*Optimal dilutions/concentrations should be determined by the researcher.

Suggested dilution	Recommended dilution
ICC/IF	Assay dependent
FCM	Assay dependent

Not tested in other applications.

Product Note This antibody recognizes the defined epitope (aa 65-97) on N-terminal structural domain of alpha-tubulin.

Properties

Form	Liquid
Buffer	PBS
Preservative	15mM Sodium azide
Storage	Store as concentrated solution. Centrifuge briefly prior to opening vial. Store at 4°C. DO NOT FREEZE. Protect from light.
Concentration	1 mg/ml (Please refer to the vial label for the specific concentration.)
Immunogen	Fraction of tubulin purified from porcine brain by two cycles of polymerization - depolymerization.
Purification	Purified by size-exclusion chromatography
Conjugation	Fluorescein isothiocyanate (FITC) Wavelength

Note

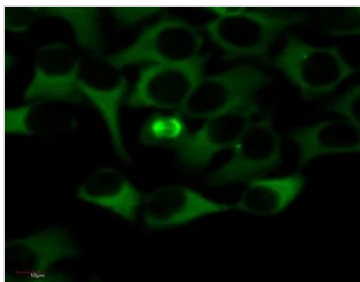
For laboratory research use only. Not for any clinical, therapeutic, or diagnostic use in humans or animals. Not for animal or human consumption.

Purchasers shall not, and agree not to enable third parties to, analyze, copy, reverse engineer or otherwise attempt to determine the structure or sequence of the product.



For full product information, images and publications, please visit our [website](#).

DATA IMAGES



GTX18247 ICC/IF Image

ICC/IF analysis of HeLa cells using GTX18247 alpha Tubulin antibody [TU-01] (FITC).



For full product information, images and publications, please visit our [website](#).