

## ZAP70 antibody [1E7.2]

Cat. No. GTX18371

Host	Mouse
Clonality	Monoclonal
Isotype	IgG1
Applications	WB, ICC/IF, FCM, IP, ELISA
Reactivity	Human, Mouse

References ( 1 )

Package

100 µg

## Applications

## Application Note

\*Optimal dilutions/concentrations should be determined by the researcher.

Suggested dilution	Recommended dilution
WB	0.5-1.0 µg/ml
ICC/IF	Assay dependent
FCM	Assay dependent
IP	Assay dependent
ELISA	Assay dependent

Not tested in other applications.

Calculated MW 70 kDa. ( [Note](#) )

## Properties

Form	Liquid
Buffer	PBS
Preservative	15mM Sodium azide
Storage	Store as concentrated solution. Centrifuge briefly prior to opening vial. For short-term storage (1-2 weeks), store at 4°C. For long-term storage, aliquot and store at -20°C or below. Avoid multiple freeze-thaw cycles.
Concentration	~1.5 mg/ml (Please refer to the vial label for the specific concentration.)
Immunogen	The immunogen sequence is conjugated to KLH. peptide corresponding to amino acids 282-307 of human ZAP-70.
Purification	Purified immunoglobulin
Conjugation	Unconjugated



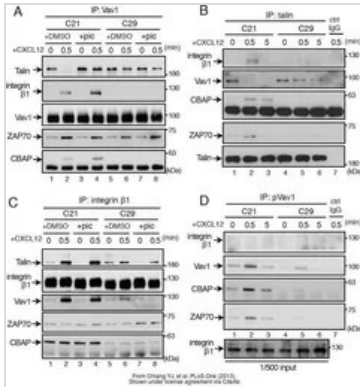
For full product information, images and publications, please visit our [website](#).

For laboratory research use only. Not for any clinical, therapeutic, or diagnostic use in humans or animals. Not for animal or human consumption.

#### Note

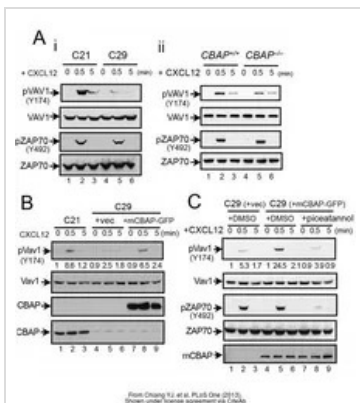
Purchasers shall not, and agree not to enable third parties to, analyze, copy, reverse engineer or otherwise attempt to determine the structure or sequence of the product.

#### DATA IMAGES



#### GTx18371 WB Image

The data was published in the journal PLoS One in 2013. [PMID: 23620790](https://doi.org/10.1371/journal.pone.0236207)



#### GTx18371 WB Image

The data was published in the journal PLoS One in 2013. [PMID: 23620790](https://doi.org/10.1371/journal.pone.0236207)



For full product information, images and publications, please visit our [website](https://www.genetex.com).