

## ZAP70 antibody [1E7.2]

Cat. No. GTX18371

<b>Host</b>	Mouse
<b>Clonality</b>	Monoclonal
<b>Isotype</b>	IgG1
<b>Applications</b>	WB, ICC/IF, FCM, IP, ELISA
<b>Reactivity</b>	Human, Mouse

References ( 1 )

Package

100 µg

## Applications

## Application Note

\*Optimal dilutions/concentrations should be determined by the researcher.

Suggested dilution	Recommended dilution
WB	0.5-1.0 µg/ml
ICC/IF	Assay dependent
FCM	Assay dependent
IP	Assay dependent
ELISA	Assay dependent

Not tested in other applications.

Calculated MW 70 kDa. ( [Note](#) )

## Properties

<b>Form</b>	Liquid
<b>Buffer</b>	PBS
<b>Preservative</b>	15mM Sodium azide
<b>Storage</b>	Store as concentrated solution. Centrifuge briefly prior to opening vial. For short-term storage (1-2 weeks), store at 4°C. For long-term storage, aliquot and store at -20°C or below. Avoid multiple freeze-thaw cycles.
<b>Concentration</b>	~1.5 mg/ml (Please refer to the vial label for the specific concentration.)
<b>Immunogen</b>	The immunogen sequence is conjugated to KLH. peptide corresponding to amino acids 282-307 of human ZAP-70.
<b>Purification</b>	Purified immunoglobulin
<b>Conjugation</b>	Unconjugated



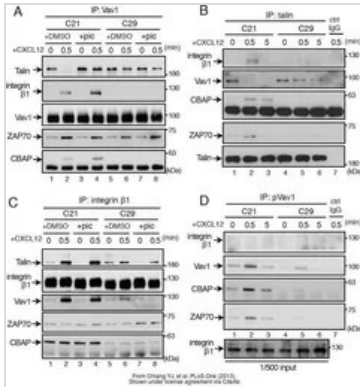
For full product information, images and publications, please visit our [website](#).

For laboratory research use only. Not for any clinical, therapeutic, or diagnostic use in humans or animals. Not for animal or human consumption.

#### Note

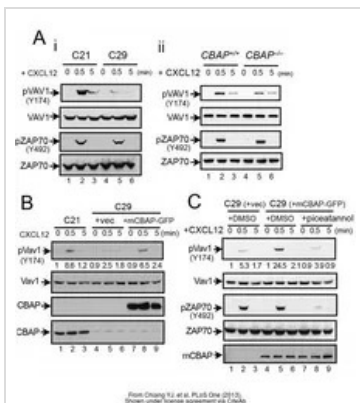
Purchasers shall not, and agree not to enable third parties to, analyze, copy, reverse engineer or otherwise attempt to determine the structure or sequence of the product.

#### DATA IMAGES



#### GTx18371 WB Image

The data was published in the journal PLoS One in 2013. [PMID: 23620790](https://doi.org/10.1371/journal.pone.0236207)



#### GTx18371 WB Image

The data was published in the journal PLoS One in 2013. [PMID: 23620790](https://doi.org/10.1371/journal.pone.0236207)



For full product information, images and publications, please visit our [website](https://www.genetex.com).