

## Neurabin 2 antibody

Cat. No. GTX18561

Host	Rabbit
Clonality	Polyclonal
Isotype	IgG
Applications	WB, IP
Reactivity	Rat

Package  
100 µg

## Applications

## Application Note

\*Optimal dilutions/concentrations should be determined by the researcher.

Suggested dilution	Recommended dilution
WB	0.25-1µg/ml
IP	4µg antibody/ 500µg lysate

Not tested in other applications.

**Calculated MW** 90 kDa. ( [Note](#) )**Product Note** Recognizes rat spinophilin at ~120kD. Also recognizes a band at ~95kD which is suspected to be a cleavage product of spinophilin.

## Properties

Form	Liquid
Buffer	100mM Tris-Glycine, 150mM NaCl, 30% Glycerol
Preservative	0.05% Sodium azide
Storage	Store as concentrated solution. Centrifuge briefly prior to opening vial. For short-term storage (1-2 weeks), store at 4°C. For long-term storage, aliquot and store at -20°C or below. Avoid multiple freeze-thaw cycles.
Concentration	Batch dependent (Please refer to the vial label for the specific concentration.)
Immunogen	GST fusion protein corresponding to residues 286-390 of rat brain Spinophilin.
Purification	Protein G purified
Conjugation	Unconjugated

## Note

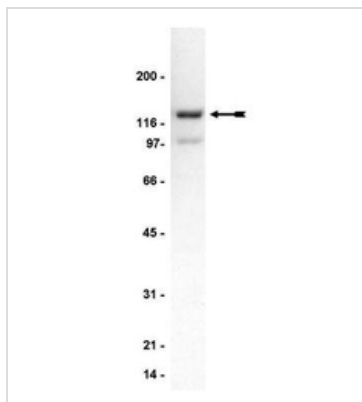
For laboratory research use only. Not for any clinical, therapeutic, or diagnostic use in humans or animals. Not for animal or human consumption.

Purchasers shall not, and agree not to enable third parties to, analyze, copy, reverse engineer or otherwise attempt to determine the structure or sequence of the product.



For full product information, images and publications, please visit our [website](#).

## DATA IMAGES



### GTx18561 WB Image

WB analysis of rat brain microsomal preparation using GTx18561 Neurabin 2 antibody.

Dilution : 0.5µg/ml



For full product information, images and publications, please visit our [website](#).