

IL22 Receptor alpha 2 antibody

Cat. No. GTX18566

Host	Goat
Clonality	Polyclonal
Isotype	IgG
Application	IHC-P, ELISA
Reactivity	Human, Mouse, Rat

Package
100 µg

APPLICATION

Application Note

*Optimal dilutions/concentrations should be determined by the researcher.

Suggested dilution	Recommended dilution
IHC-P	1:300
ELISA	1:50,000

Not tested in other applications.

Calculated MW 31 kDa. ([Note](#))

PROPERTIES

Form	Liquid
Buffer	10mM KHPO ₄ , 140mM NaCl, 0.1% BSA
Preservative	0.1% Sodium azide
Storage	Store as concentrated solution. Centrifuge briefly prior to opening vial. For short-term storage (1-2 weeks), store at 4°C. For long-term storage, aliquot and store at -20°C or below. Avoid multiple freeze-thaw cycles.
Concentration	1 mg/ml (Please refer to the vial label for the specific concentration.)
Immunogen	Synthetic peptide RVQFSRNFHNILQWQPGRALTGNSSVY-C corresponding to 33-60 residues of N-terminus of human IL-22R-alpha-2 protein with cysteine added for conjugation to a carrier protein
Purification	Purified by affinity chromatography
Conjugation	Unconjugated

Note

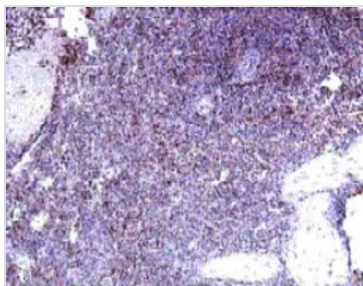
For laboratory research use only. Not for any clinical, therapeutic, or diagnostic use in humans or animals. Not for animal or human consumption.

Purchasers shall not, and agree not to enable third parties to, analyze, copy, reverse engineer or otherwise attempt to determine the structure or sequence of the product.



For full product information, images and publications, please visit our [website](#).

DATA IMAGES



GTX18566 IHC-P Image

IHC-P analysis of human spleen tissue using GTX18566 IL22 Receptor alpha 2 antibody.



For full product information, images and publications, please visit our [website](#).