

IL28 Receptor alpha antibody

Cat. No. GTX18567

Host	Goat
Clonality	Polyclonal
Isotype	IgG
Applications	IHC-P, FCM, ELISA
Reactivity	Mouse, Rat

Package
100 µg

Applications

Application Note

*Optimal dilutions/concentrations should be determined by the researcher.

Suggested dilution	Recommended dilution
IHC-P	1:300
FCM	1:10
ELISA	1:50,000

Not tested in other applications.

Product Note

This antibody recognizes the N-terminus of mouse CRF-2-12 (IL-28 receptor alpha) protein. The peptide sequence is < 50 % identical to other sequences in GenBank.

Properties

Form	Liquid
Buffer	10mM KHPO ₄ , 140mM NaCl, 0.1% BSA
Preservative	0.1% Sodium azide
Storage	Store as concentrated solution. Centrifuge briefly prior to opening vial. For short-term storage (1-2 weeks), store at 4°C. For long-term storage, aliquot and store at -20°C or below. Avoid multiple freeze-thaw cycles.
Concentration	1 mg/ml (Please refer to the vial label for the specific concentration.)
Immunogen	Synthetic peptide LPGLGSPPNVTYFVTYQSYIKTGWRPVEH corresponding to 44-72 residues of N-terminus of mouse IL-28RA
Purification	Purified by affinity chromatography
Conjugation	Unconjugated

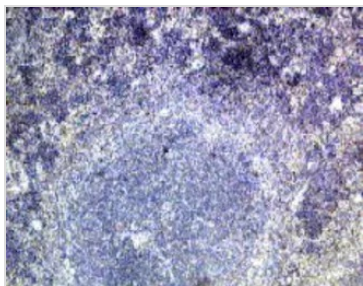
Note

For laboratory research use only. Not for any clinical, therapeutic, or diagnostic use in humans or animals. Not for animal or human consumption.

Purchasers shall not, and agree not to enable third parties to, analyze, copy, reverse engineer or otherwise attempt to determine the structure or sequence of the product.



For full product information, images and publications, please visit our [website](#).

DATA IMAGES

GTX18567 IHC-P Image

IHC-P analysis of mouse spleen tissue using GTX18567 IL28 Receptor alpha antibody.



For full product information, images and publications, please visit our [website](#).