

PAN3 antibody

Cat. No. GTX18622

Host	Rabbit
Clonality	Polyclonal
Isotype	IgG
Applications	WB, IHC-P, FCM
Reactivity	Human

Package
400 µl

Applications

Application Note

*Optimal dilutions/concentrations should be determined by the researcher.

Suggested dilution	Recommended dilution
WB	1:1000
IHC-P	1:50-1:100
FCM	1:10-1:50

Not tested in other applications.

Calculated MW 96 kDa. ([Note](#))

Properties

Form	Liquid
Buffer	PBS
Preservative	0.09% Sodium azide
Storage	Store as concentrated solution. Centrifuge briefly prior to opening vial. For short-term storage (1-2 weeks), store at 4°C. For long-term storage, aliquot and store at -20°C or below. Avoid multiple freeze-thaw cycles.
Concentration	Batch dependent (Please refer to the vial label for the specific concentration.)
Immunogen	A KLH conjugated synthetic peptide between 771-799 amino acids from the C-terminal region of human PAN3.
Purification	Protein A purified followed by peptide affinity purification.
Conjugation	Unconjugated

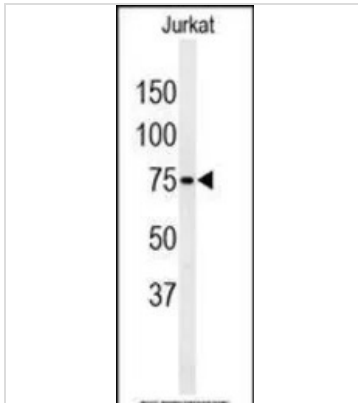
Note

For laboratory research use only. Not for any clinical, therapeutic, or diagnostic use in humans or animals. Not for animal or human consumption.

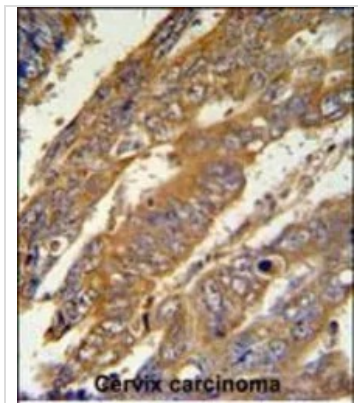
Purchasers shall not, and agree not to enable third parties to, analyze, copy, reverse engineer or otherwise attempt to determine the structure or sequence of the product.



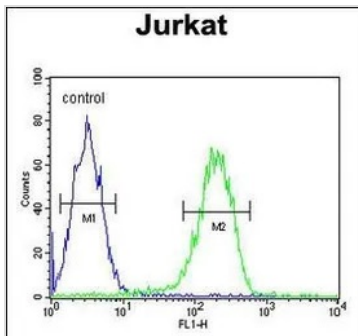
For full product information, images and publications, please visit our [website](#).

DATA IMAGES

GTX18622 WB Image

WB analysis of Jurkat cells using GTX18622 PAN3 antibody.


GTX18622 IHC-P Image

IHC-P analysis of human cervix carcinoma tissue using GTX18622 PAN3 antibody.


GTX18622 FCM Image

FACS analysis of Jurkat cells using GTX18622 PAN3 antibody.

Right histogram : Jurkat cells

Left histogram : negative control



For full product information, images and publications, please visit our [website](https://www.genetex.com).