

FGF2 antibody [F-74]

Cat. No. GTX18631

Host	Mouse
Clonality	Monoclonal
Isotype	IgG2a
Applications	WB, ELISA
Reactivity	Human

Package
250 µg

Applications

Application Note

ELISA: Use at an assay dependent dilution. Optimal dilutions/concentrations should be determined by the end user.

Calculated MW 31 kDa. ([Note](#))

Properties

Form	Liquid
Buffer	PBS
Preservative	No preservatives
Storage	Store as concentrated solution. Centrifuge briefly prior to opening vial. For short-term storage (1-2 weeks), store at 4°C. For long-term storage, aliquot and store at -20°C or below. Avoid multiple freeze-thaw cycles.
Concentration	1 mg/ml (Please refer to the vial label for the specific concentration.)
Immunogen	Full length native protein (purified) (Human).
Purification	Protein G purified
Conjugation	Unconjugated

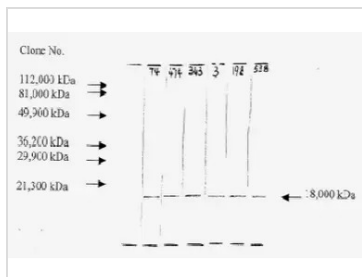
Note

For laboratory research use only. Not for any clinical, therapeutic, or diagnostic use in humans or animals. Not for animal or human consumption.

Purchasers shall not, and agree not to enable third parties to, analyze, copy, reverse engineer or otherwise attempt to determine the structure or sequence of the product.



For full product information, images and publications, please visit our [website](#).

DATA IMAGES

GTX18631 WB Image

Western blot analysis of recombinant human bFGF using anti-human bFGF monoclonal antibodies. From the left, first lane is GTX18631.



For full product information, images and publications, please visit our [website](https://www.genetex.com).