

CXCL8 / IL8 antibody [I8-60]

Cat. No. GTX18656

Host	Mouse
Clonality	Monoclonal
Isotype	IgG1
Applications	WB, ELISA, Neutralizing/Inhibition
Reactivity	Human

Package
250 µg

Applications

Application Note

For ELISA: Use at an assay dependent dilution. Can be used as a detection antibody in an ELISA pair with GTX18649 (capture). For Neut: Use at a concentration of 5 µg/ml with 10 ng/ml IL8 for 98.4% inhibition of chemotactic activity. For WB: Use at a concentration of 0.02 - 0.1 µg/ml. Predicted molecular weight: 11 kDa. Optimal dilutions/concentrations should be determined by the end user.

Calculated MW	11 kDa. (Note)
Product Note	This antibody recognises both recombinant and native IL8. It does not cross react with Monocyte Chemotactic Activating Factor (MCAF) or Regulated on Activation, Normal T-cell Expressed, and Secreted (RANTES).

Properties

Form	Liquid
Buffer	PBS
Preservative	No preservatives
Storage	Store as concentrated solution. Centrifuge briefly prior to opening vial. For short-term storage (1-2 weeks), store at 4°C. For long-term storage, aliquot and store at -20°C or below. Avoid multiple freeze-thaw cycles.
Concentration	1 mg/ml (Please refer to the vial label for the specific concentration.)
Immunogen	Purified recombinant (Human).
Purification	Protein G purified
Conjugation	Unconjugated

Note

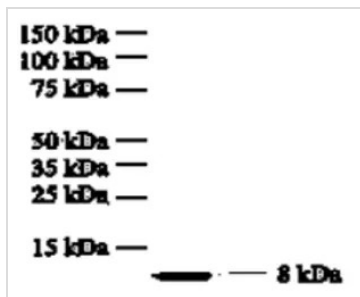
For laboratory research use only. Not for any clinical, therapeutic, or diagnostic use in humans or animals. Not for animal or human consumption.

Purchasers shall not, and agree not to enable third parties to, analyze, copy, reverse engineer or otherwise attempt to determine the structure or sequence of the product.



For full product information, images and publications, please visit our [website](#).

DATA IMAGES



GTX18656 WB Image

Western blot analysis of Human IL-8 using clone I8-60. Concentration of 0.02-0.1 ug/mL antibody will allow visualization of 100 ng/lane of human IL-8.



For full product information, images and publications, please visit our [website](https://www.genetex.com).