

CXCL8 / IL8 antibody [807]

Cat. No. GTX18672

Host	Mouse
Clonality	Monoclonal
Isotype	IgG1
Applications	WB, ELISA, Neutralizing/Inhibition
Reactivity	Human

Package
250 µg

Applications

Application Note

ELISA: Use at an assay dependent dilution. Neut: Use at an assay dependent dilution. WB: Use at a concentration of 0.02 - 0.1 µg/ml. Predicted molecular weight: 12 kDa. Optimal dilutions/concentrations should be determined by the end user. Concentration of 0.02-0.1 ug/ml of GTX18672 will allow visualization of 100 ng/lane of human IL-8.

Calculated MW	11 kDa. (Note)
Product Note	This antibody recognizes both, recombinant and native human IL-8. This antibody does not cross react with human Monocyte Chemotactic Activating Factor (MCAF) or RANTES (Regulated on Activation, Normal T-cell Expressed, and Secreted).

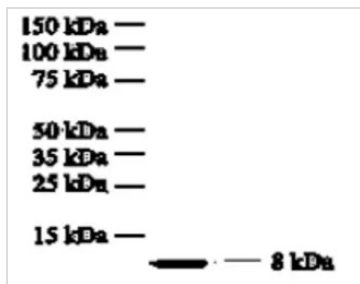
Properties

Form	Liquid
Buffer	PBS
Preservative	No preservatives
Storage	Store as concentrated solution. Centrifuge briefly prior to opening vial. For short-term storage (1-2 weeks), store at 4°C. For long-term storage, aliquot and store at -20°C or below. Avoid multiple freeze-thaw cycles.
Concentration	1 mg/ml (Please refer to the vial label for the specific concentration.)
Immunogen	Purified recombinant human IL-8.
Purification	Protein G purified
Conjugation	Unconjugated
Note	For laboratory research use only. Not for any clinical, therapeutic, or diagnostic use in humans or animals. Not for animal or human consumption. Purchasers shall not, and agree not to enable third parties to, analyze, copy, reverse engineer or otherwise attempt to determine the structure or sequence of the product.



For full product information, images and publications, please visit our [website](#).

DATA IMAGES



GTX18672 WB Image

Western blot analysis of Human IL-8 using anti-human IL-8 mAb 807. The antibody when used at concentration of 0.02-0.1 ug/mL will allow visualization of 100 ng/lane of human IL-8.



For full product information, images and publications, please visit our [website](#).