

I-Myc antibody [CHALU2]

Cat. No. GTX18704

Host	Mouse
Clonality	Monoclonal
Isotype	IgG1
Application	FACS
Reactivity	Human

Package
250 µg

APPLICATION

Application Note

Tested in peptide ELISA. Optimal dilutions/concentrations should be determined by the end user.

Calculated MW	40 kDa. (Note)
Product Note	Using indirect immunofluorescence assay and ELISA, this monoclonal antibody showed positive reaction with lung adenocarcinoma, squamous cancer and small cell carcinoma. It is also positive to some human melanoma and other tumours. This antibody does not cross reacts with human adult normal tissues and fetal tissues.

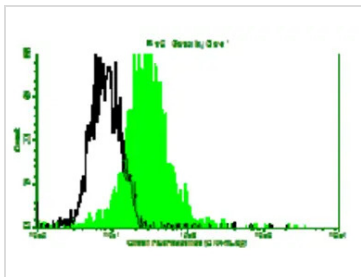
PROPERTIES

Form	Liquid
Buffer	0.02M PBS pH7.0
Preservative	No preservative
Storage	Store as concentrated solution. Centrifuge briefly prior to opening vial. For short-term storage (1-2 weeks), store at 4°C. For long-term storage, aliquot and store at -20°C or below. Avoid multiple freeze-thaw cycles.
Concentration	1 mg/ml (Please refer to the vial label for the specific concentration.)
Immunogen	Human lung carcinoma cells.
Conjugation	Unconjugated
Note	For laboratory research use only. Not for any clinical, therapeutic, or diagnostic use in humans or animals. Not for animal or human consumption. Purchasers shall not, and agree not to enable third parties to, analyze, copy, reverse engineer or otherwise attempt to determine the structure or sequence of the product.



For full product information, images and publications, please visit our [website](#).

DATA IMAGES



GTX18704 FACS Image

N9 cells stained with 10 ug/mL mAb clone CHALU2 and fluorescence labelled secondary antibody. Black line represents the histogram of N9 cells stained by control antibody, mAb anti-TB 38Kd antigen clone B12F8.



For full product information, images and publications, please visit our [website](#).

Date 2024 / 04 / 28 Page 2 of 2