

# Aromatase antibody

**Cat. No. GTX18995**

<b>Host</b>	Rabbit
<b>Clonality</b>	Polyclonal
<b>Isotype</b>	IgG
<b>Application</b>	WB, ICC/IF, IHC-P, IHC
<b>Reactivity</b>	Human, Mouse, Rat, Rabbit, Bovine, Chicken, Pig, Horse

Reference ( 5 )  
Package  
50 µg

## APPLICATION

### Application Note

\*Optimal dilutions/concentrations should be determined by the researcher.

Suggested dilution	Recommended dilution
WB	0.5-4 µg/ml
ICC/IF	Assay dependent
IHC-P	Assay dependent
IHC	10-20 µg/ml

Not tested in other applications.

**Calculated MW** 58 kDa. ( [Note](#) )

## PROPERTIES

<b>Form</b>	Liquid
<b>Buffer</b>	PBS, 0.5% BSA, 30% Glycerol, 5mM EDTA
<b>Preservative</b>	0.03% ProClin
<b>Storage</b>	Store as concentrated solution. Centrifuge briefly prior to opening vial. For short-term storage (1-2 weeks), store at 4°C. For long-term storage, aliquot and store at -20°C or below. Avoid multiple freeze-thaw cycles.
<b>Concentration</b>	0.5 mg/ml (Please refer to the vial label for the specific concentration.)
<b>Immunogen</b>	Synthetic peptide surrounding amino acid 385 of human Aromatase
<b>Purification</b>	Purified by antigen-affinity chromatography
<b>Conjugation</b>	Unconjugated

### Note

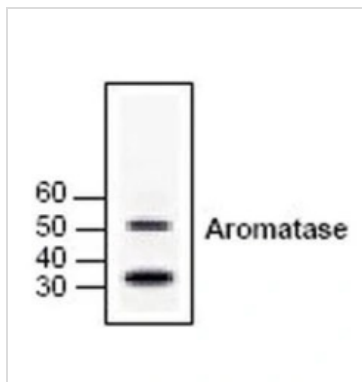
For laboratory research use only. Not for any clinical, therapeutic, or diagnostic use in humans or animals. Not for animal or human consumption.

Purchasers shall not, and agree not to enable third parties to, analyze, copy, reverse engineer or otherwise attempt to determine the structure or sequence of the product.



For full product information, images and publications, please visit our [website](#).

## DATA IMAGES



### GTX18995 WB Image

WB analysis of human brain lysate using GTX18995 Aromatase antibody.



For full product information, images and publications, please visit our [website](#).