

# Androgen Receptor antibody, N-term

**Cat. No. GTX19066**

|                     |                               |
|---------------------|-------------------------------|
| <b>Host</b>         | Goat                          |
| <b>Clonality</b>    | Polyclonal                    |
| <b>Isotype</b>      | IgG                           |
| <b>Applications</b> | WB, ICC/IF, IHC-P, ChIP assay |
| <b>Reactivity</b>   | Human                         |

**Package**  
100 µg

## Applications

### Application Note

\*Optimal dilutions/concentrations should be determined by the researcher.

| Suggested dilution | Recommended dilution |
|--------------------|----------------------|
| WB                 | 0.1-0.5µg/ml         |
| ICC/IF             | 10µg/ml              |
| IHC-P              | 2-3µg/ml             |
| ChIP assay         | Assay dependent      |

**Note : Strong expression of the protein seen in the mitochondrial/cytoplasmic of MCF7 and U2OS cells. Human Prostate shows nuclear staining in the secretory cells of the gland.**

Not tested in other applications.

**Calculated MW** 99 kDa. ( [Note](#) )

**Product Note** This antibody is expected to recognize isoform 1 (NP\_000035.2) only.

## Properties

|                      |                                                                                                                                                                                                                            |
|----------------------|----------------------------------------------------------------------------------------------------------------------------------------------------------------------------------------------------------------------------|
| <b>Form</b>          | Liquid                                                                                                                                                                                                                     |
| <b>Buffer</b>        | TBS, 0.5% BSA                                                                                                                                                                                                              |
| <b>Preservative</b>  | 0.02% Sodium azide                                                                                                                                                                                                         |
| <b>Storage</b>       | Store as concentrated solution. Centrifuge briefly prior to opening vial. For short-term storage (1-2 weeks), store at 4°C. For long-term storage, aliquot and store at -20°C or below. Avoid multiple freeze-thaw cycles. |
| <b>Concentration</b> | 0.50 mg/ml (Please refer to the vial label for the specific concentration.)                                                                                                                                                |
| <b>Immunogen</b>     | Peptide with sequence EVQLGLGRVYPRPPSC, from the N Terminus of the protein sequence according to NP_000035.2.                                                                                                              |
| <b>Purification</b>  | Purified by ammonium sulphate precipitation followed by antigen affinity chromatography                                                                                                                                    |
| <b>Conjugation</b>   | Unconjugated                                                                                                                                                                                                               |



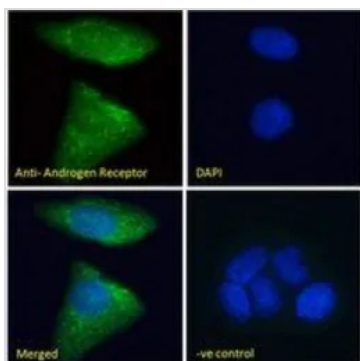
For full product information, images and publications, please visit our [website](#).

For laboratory research use only. Not for any clinical, therapeutic, or diagnostic use in humans or animals. Not for animal or human consumption.

## Note

Purchasers shall not, and agree not to enable third parties to, analyze, copy, reverse engineer or otherwise attempt to determine the structure or sequence of the product.

## DATA IMAGES



### GTx19066 ICC/IF Image

ICC/IF analysis of PFA fixed MCF7 cells using GTx19066 Androgen Receptor antibody, N-term.

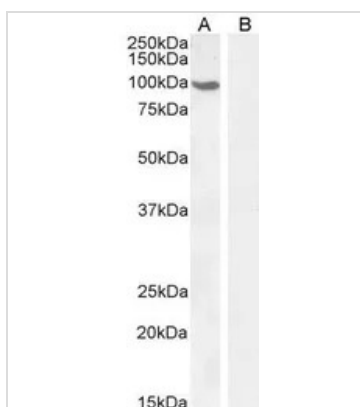
Green : Primary antibody

Blue : DAPI

Negative control : Unimmunized goat IgG

Permeabilization : 0.15% Triton

Dilution : 10µg/ml

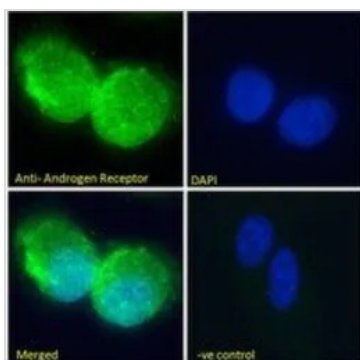


### GTx19066 WB Image

WB analysis of human cerebellum (A) and negative control pancreas (B) lysate using GTx19066 Androgen Receptor antibody, N-term.

Dilution : 0.5µg/ml

Loading : 35µg protein in RIPA buffer



### GTx19066 ICC/IF Image

ICC/IF analysis of PFA fixed U2OS cells using GTx19066 Androgen Receptor antibody, N-term.

Green : Primary antibody

Blue : DAPI

Negative control : Unimmunized goat IgG

Permeabilization : 0.15% Triton

Dilution : 10µg/ml



For full product information, images and publications, please visit our [website](https://www.genetex.com).